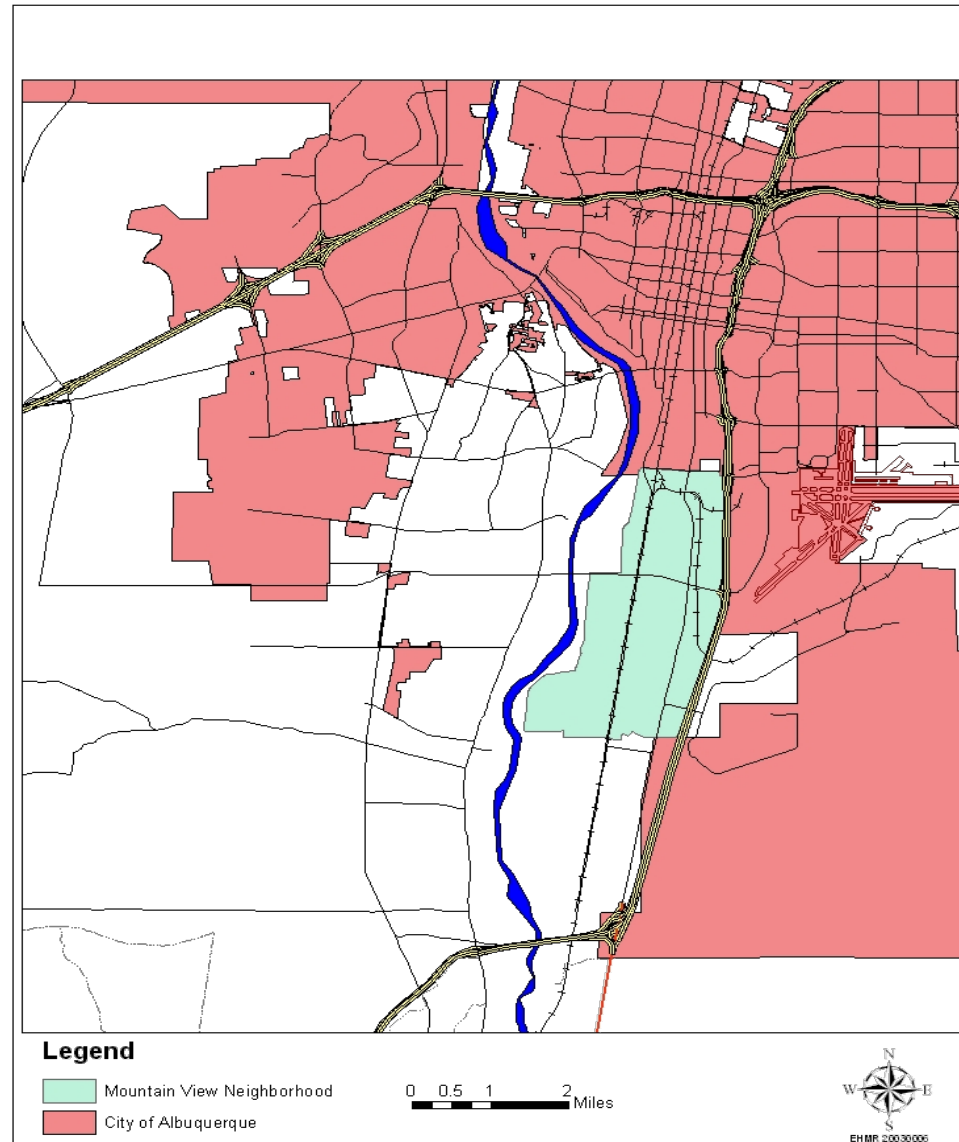
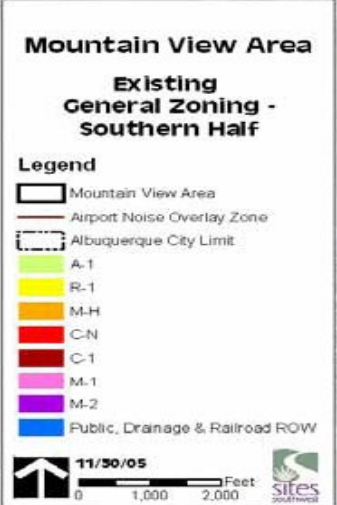


Location of Mountain View



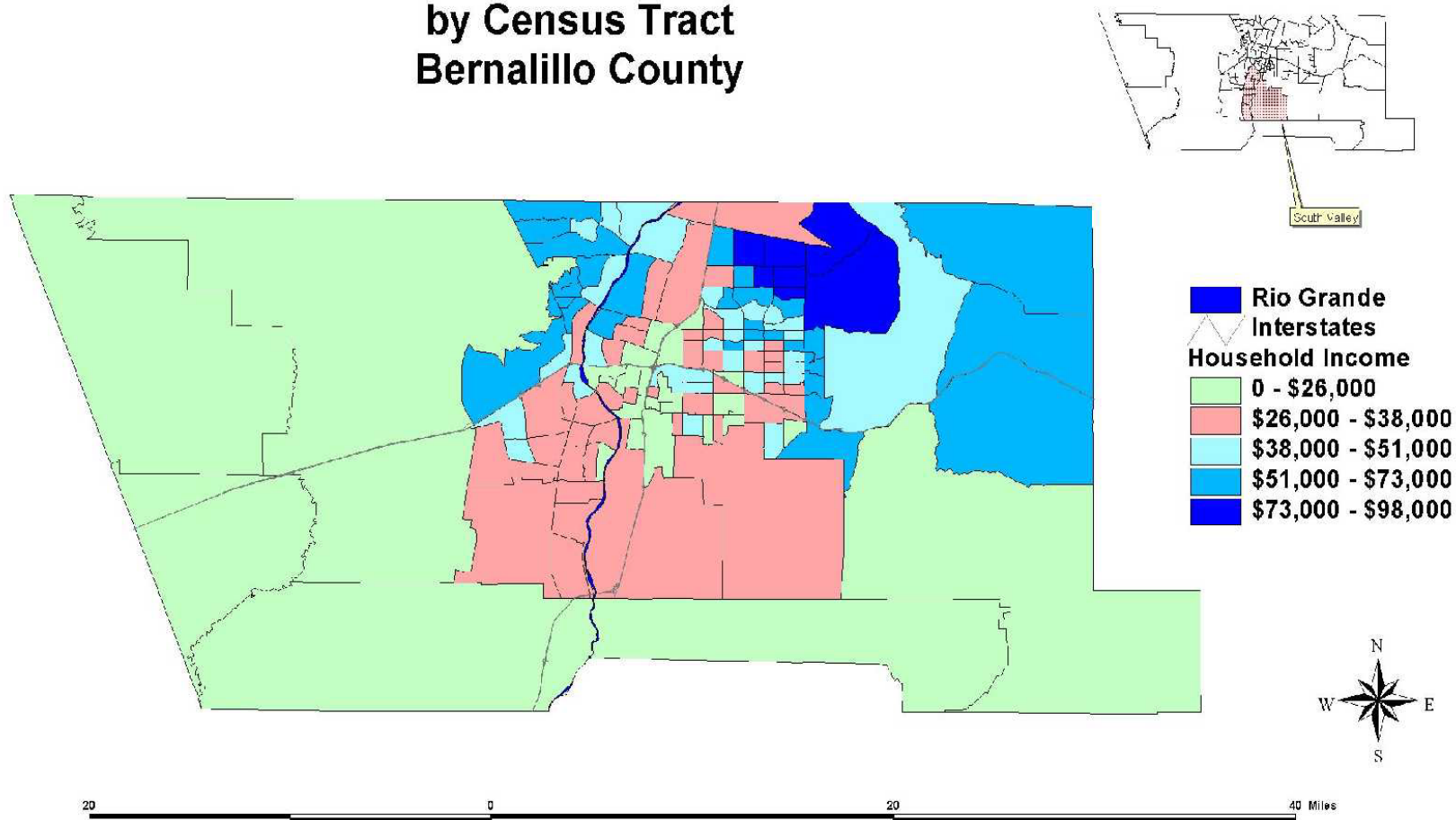
Approximately
8,400 acres

Map created by
Sites Southwest



•**Median Household Income in Mtn. View, 2000: \$32,131**

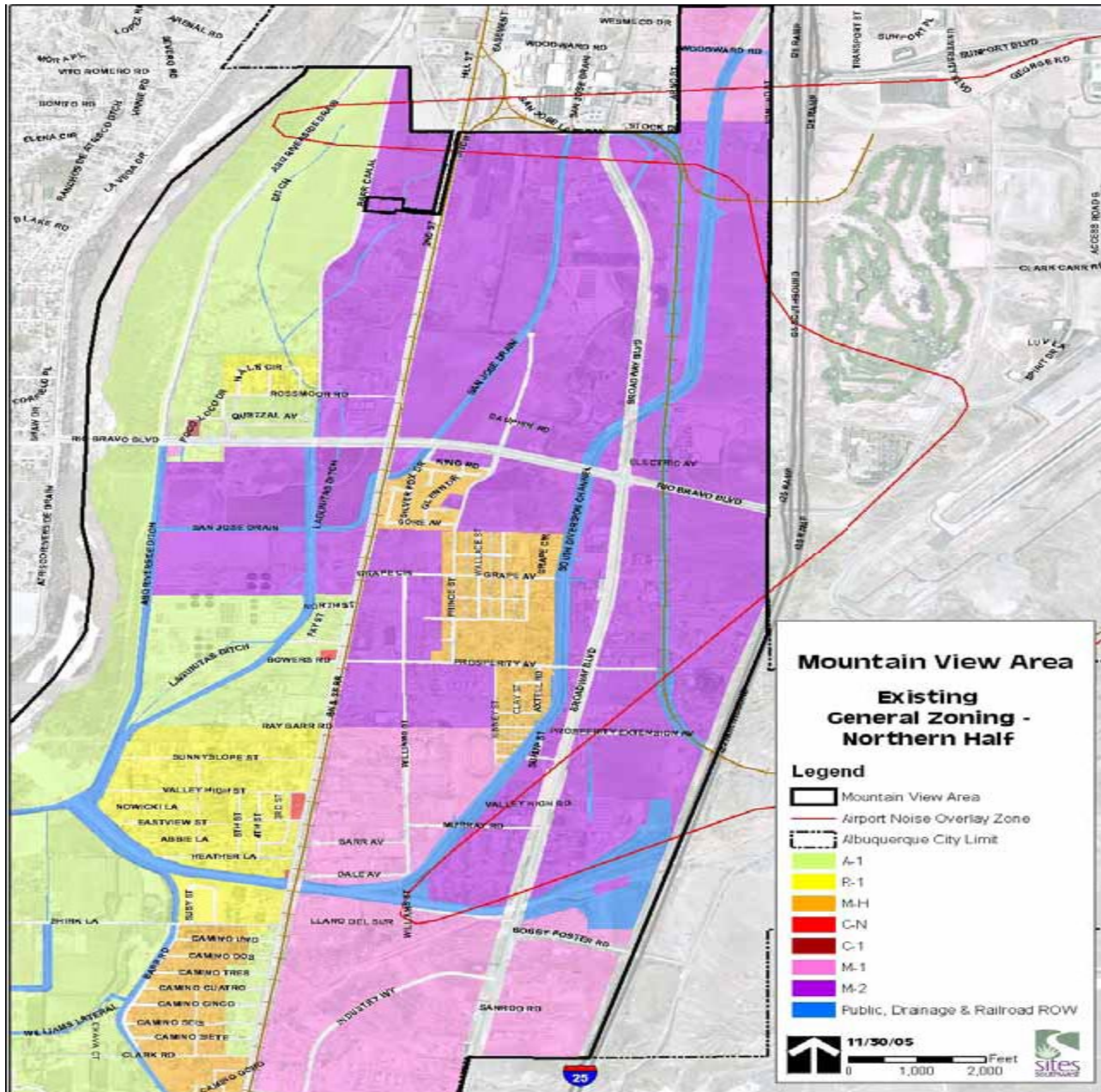
**Household Income
by Census Tract
Bernalillo County**



Zoning in Mountain View

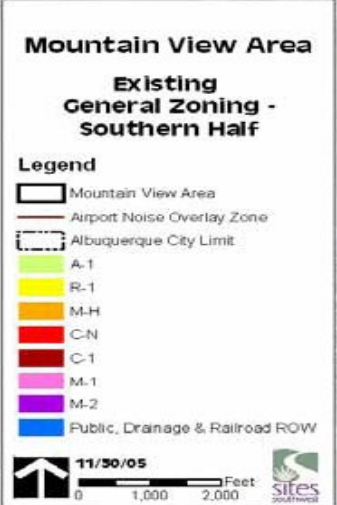
Zoning Type	Acres	% of Area
A-1	2,931.8	44.9%
R-1	207.2	3.2%
M-H	216.9	33.3%
C-1	15.5	0.2%
C-N	3.4	0.1%
M-1	1,281.4	19.6%
M-2	1,594.0	24.4%
QCD	0.2	0.0%
Right of Way	493.5	7.5%

Zoning Map North MV



Map created by
Sites Southwest

Map created by
Sites Southwest



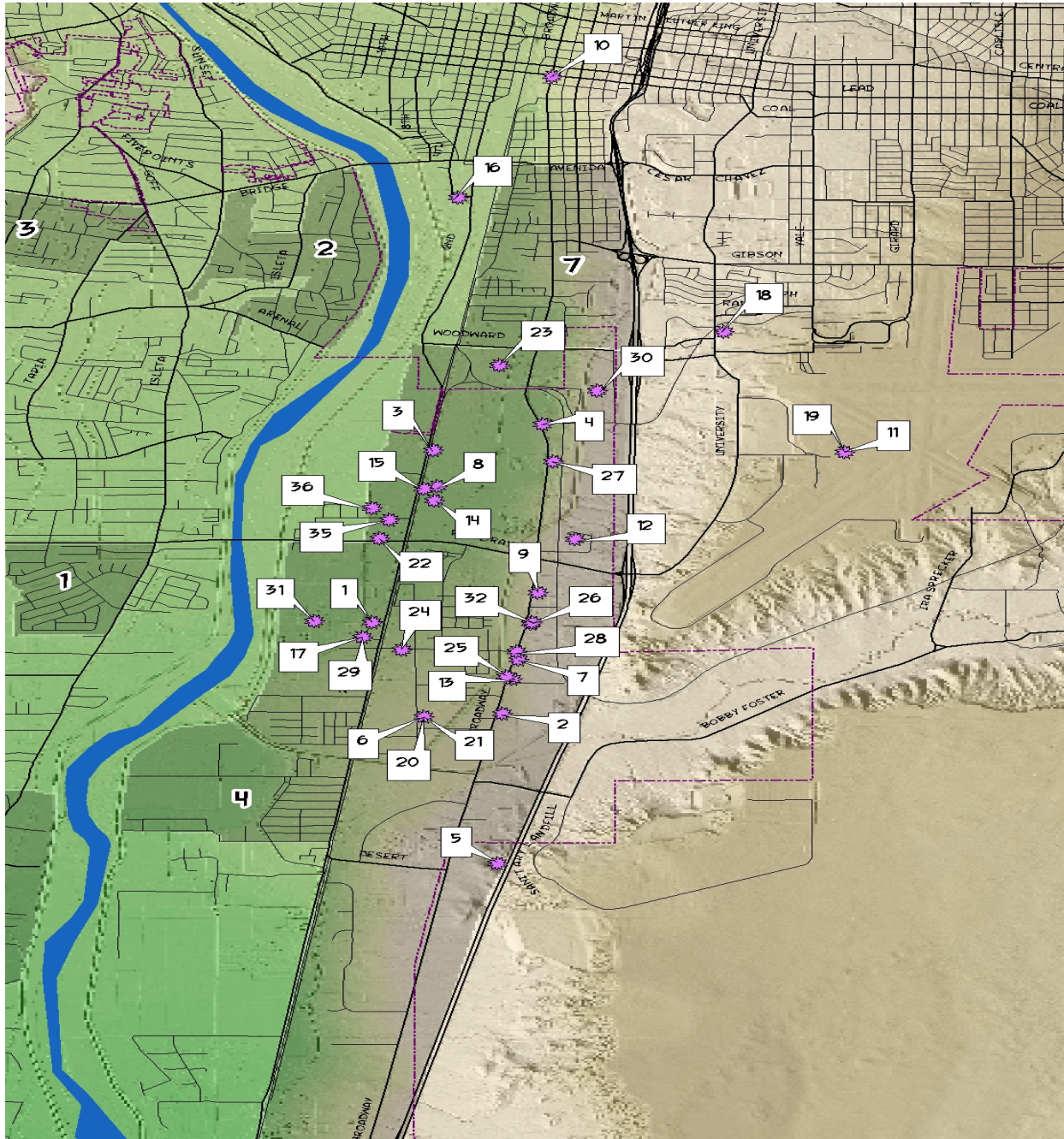
Environmental Justice

“Racial discrimination in environmental policy making and the enforcement of regulations and laws, the deliberate targeting of people of color communities for toxic waste facilities, the official sanctioning of the life threatening presence of poisons and pollutants in our communities, and the history of excluding people of color from the leadership of the environmental movement.”

Dr. Reverend Benjamin Chavis

Polluting Industries

- **31 out of 36 EPA regulated polluting industries located in the South Valley are located in Mountain View**
- **There are 16 big air pollutant industries**
- **In addition to the 16 bigger air polluters there are 66 + smaller industries**



1	Abq. Liquid Waste	RCRA	18.	Ethicon Endo-Surgery	TRI Site
2	Abq. Foreign Auto parts	RCRA	19	Federal Express	RCRA
3	Abq. Metal Recycling	Toxic Air Releases	20	Fox Manufacturing	RCRA Toxic Air Releases
4	Abq. Auto Auction	RCRA	21	Fox Manufacturing	RCRA Toxic Air Releases
5	Abq. Refined Products	TRI Site	22	Furrow Bldg. Materials	RCRA
6	American Pipe Division	RCRA	23	GE Aircraft Engines	TRI Site Toxic Air Releases
7	Approved Oil Service		24	Kinney Brick Co.	Toxic Air Releases
8	AT&SF	Superfund Site	25	Mesa Oil Inc.	RCRA
9	Conoco Abq. Products	RCRA Toxic Air Releases	26	Olgin's Auto Sales	RCRA
10	Creamland Dairies Ice Cream	TRI Site	27	Premier Industries	RCRA Toxic Air Releases
11	Cutter Flying Service	RCRA	28	Pro-Guard Holdings	RCRA
12	Delta Person Limited	D/C into surface water RCRA T.A.R.	29	Security Env. Systems	RCRA
13	Discount Auto Parts	RCRA Toxic Air Releases	30	South Valley	Superfund Site
14	DPC Industries Inc.	TRI Site	31	Southside Water Reclamation	D/C into surface water RCRA Toxic Air Releases
15	DPC Industries Inc.	RCRA Toxic Air Releases	32	Southwest Abatement	RCRA
16	El Encanto Inc.	TRI Site	33	TIW Fabrication & Machining	TRI Site
17	Env. Transportation	RCRA	34	Wall Colmonoy Corp.	TRI Site
			35	& 36 Wellborn De Corp.	RCRA TRI Site

25 + Auto Recycling Yards (junk yards)



35 Hazardous Waste Facilities



Dupont Paint Factory



7 Bulk terminals



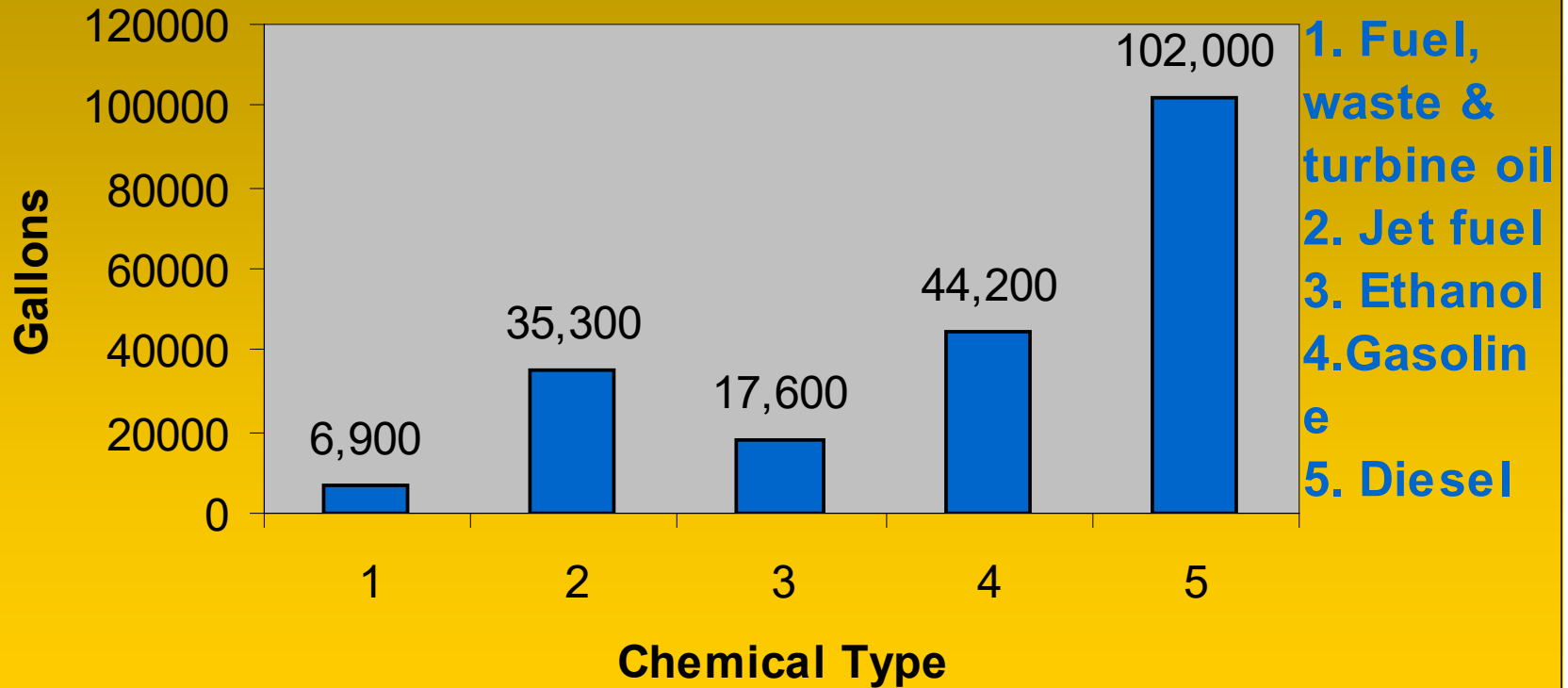
Spilled

Conoco Phillips

- 16,800 gallons of Jet fuel in 1990
- 16,000g of ethanol in 1990
- 4,200g of gasoline in 1996
- 1,000g of fuel in 1997
- 20,000g of diesel in 2001
- 40,000g of gasoline in 2003

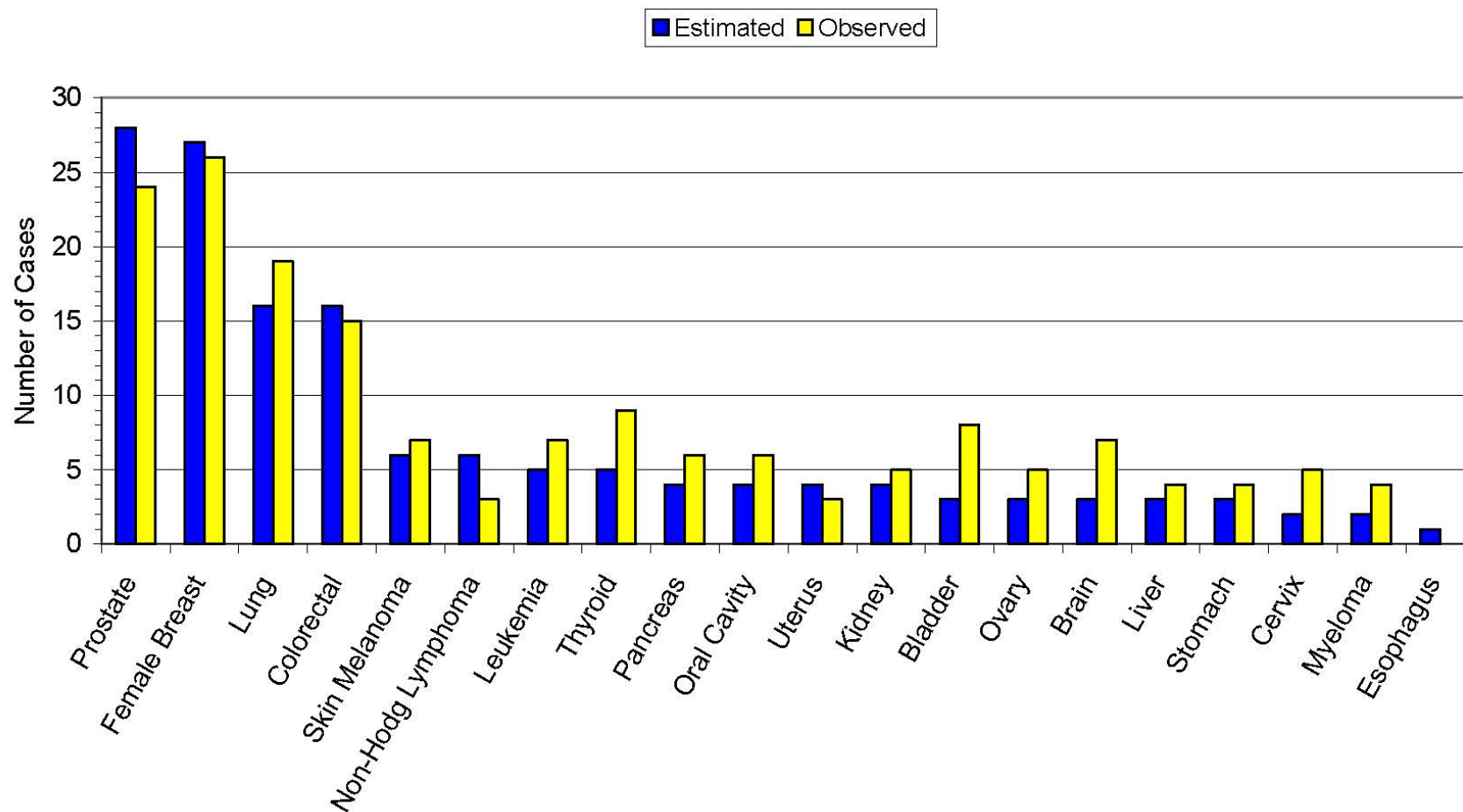


Chemical Spills 1980-2004



Total Spills: 206,000 Gallons in the past 20 years

Estimated and observed number of cancer cases in Mountain View 1988-2002

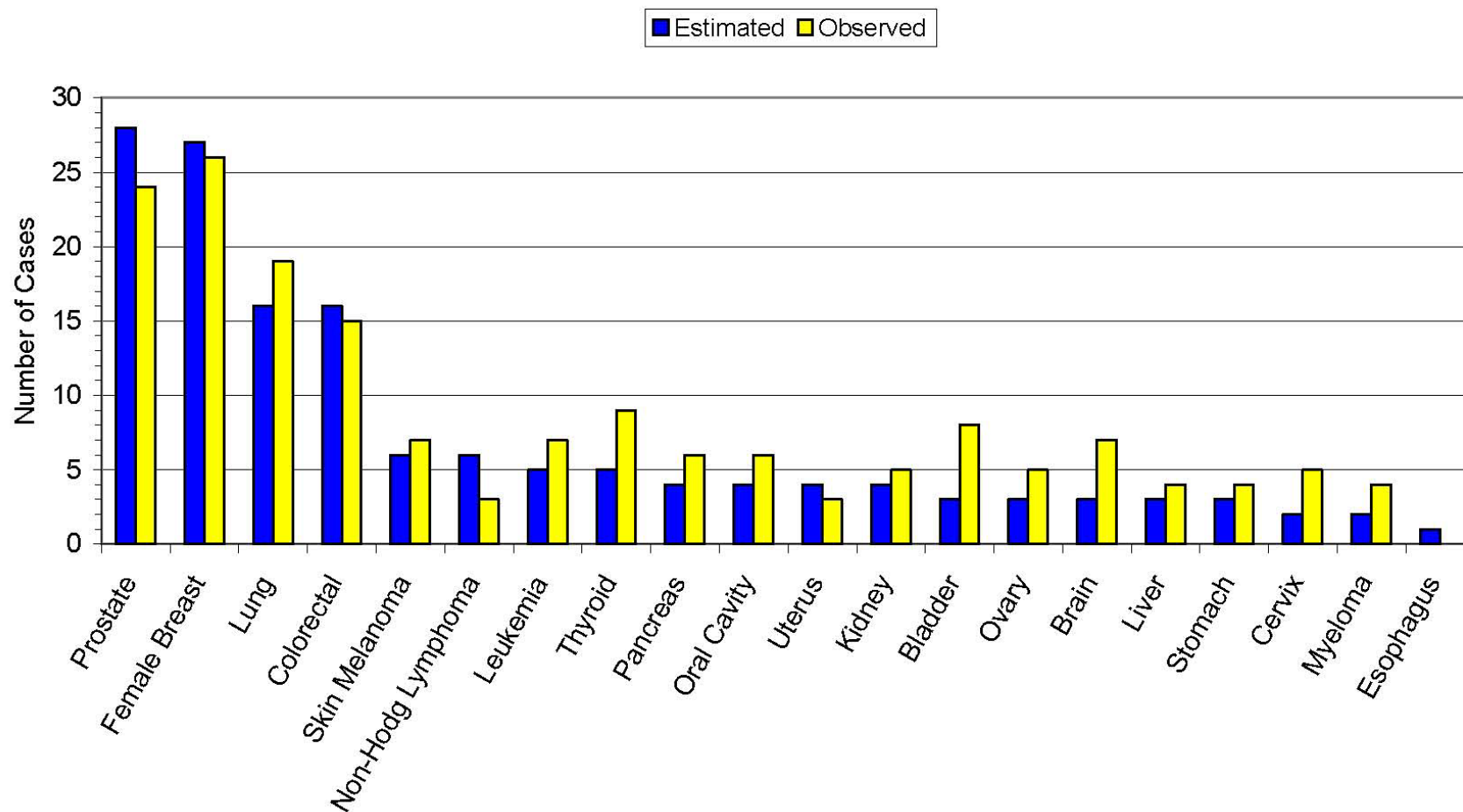


(New Mexico Tumor Registry)

Superfund Sites

- **Petroleum Hydrocarbon Plumes**
 - **Chevron**
 - **Texaco**
 - **ATA Pipeline**
- **GE Chlorinated Solvents**

Estimated and observed number of cancer cases in Mountain View 1988-2002



(New Mexico Tumor Registry)

Community Participation

- • **Profiles:** Community Information/Data, etc...
- • **Outreach:** Schools, Community Centers, South Valley Ink, Neighborhood, etc...
- • **Proposed legislation &/or Testimonies:** Environmental Crimes Court, NMED Listening Session, Hearings, etc...
- • **Flyers:** CAC, Signs, etc...
- • **Health Fairs & Community Events:**
- • **Maps:** (Boundaries of Communities, Census Data info), etc...
- • **Educational materials:** Articles in the South Valley Ink, Green Sheets, Brochures, etc...
- • **Toxic Tours:** Community, Reporters, Students, etc...

Cumulative Impacts

refers to the total burden – positive, neutral, or negative – from chemical and non-chemical stressors and their interactions that affect the health, well-being, and quality of life of an individual, community, or population at a given point in time or over a period of time. Cumulative impacts include contemporary exposures in various environments where individuals spend time and past exposures that have lingering effects. Total burden encompasses direct health effects and indirect effects to people through impacts on resources and the environment that affect human health and well-being. Cumulative impacts provide context for characterizing the potential state of vulnerability or resilience of the community, i.e., their ability to withstand or recover from additional exposures under consideration.

*Cumulative Impacts: Recommendations for ORD Research
USEPA Office of Research and Development (Jan 2022)*