

September 5, 2024

Via email to: OBAMap@cabq.gov

Re: Overburdened Areas Map Version 0.1

The New Mexico Environmental Law Center submits these comments on behalf of the Mountain View Neighborhood Association, Mountain View Community Action, and Friends of Valle de Oro (collectively, the “Mountain View Coalition” or “MVC”). The Mountain View Coalition appreciates the opportunity to submit written comments on the City of Albuquerque Environmental Health Department’s (“EHD”) Overburdened Area Map Version 0.1 and reserves the right to make additional comments on the mapping process and versions of the Overburdened Areas Map as the map development continues.

I. EHD’s Overburdened Areas Map is incomplete.

- A. EHD has discretion to consider factors that impact the health of residents in overburdened areas beyond those listed in the adopted Health, Environment and Equity Impacts Rule.

In developing the Overburdened Areas Map, EHD’s first task is to determine what areas in Albuquerque and Bernalillo County are overburdened. EHD has discretion in making this determination, as an overburdened area means “the twenty percent of census blockgroups in Bernalillo County that experience the highest cumulative environmental and public health stressors, considering at least the environmental factors, health indicators and social determinants of health indicators” as defined in 20.11.72 NMAC.¹

Because EHD has the discretion to consider information beyond the factors listed in the HEEI Rule,² based on the best available science and data on health and the environment,³ the Coalition urges EHD to utilize the information provided by the Coalition and its allies during the HEEI rulemaking proceeding,⁴ as well as the comments below, to guide and better inform its mapping of overburdened areas in Albuquerque and Bernalillo County.

¹ 20.11.72.7.D NMAC (emphasis added).

² *Id.*

³ 20.11.72.8.A NMAC.

⁴ See AQCB Docket No. 2022-03, accessible here:
<https://www.dropbox.com/scl/fo/ftzpfvuwnpmwu7vg492o/AJVv1VSwOybEfxPMg5duhgY?rlkey=mk8ox5s9vihwhzt668d7s8xy0&e=1&dl=0>

Additionally, discussed in greater detail below, the Mountain View Coalition suggests that EHD include both the locations and consideration of existing Superfund sites in Albuquerque and Bernalillo County, brownfields, and other existing sites of contamination, including groundwater contamination, as well as the location of all sensitive sites, such as schools, hospitals, and other public service spaces, that impact a person's ability to physically respond to the health burdens caused by air pollution in the Overburdened Areas Map. Moreover, it is not clear whether, or how, EHD's Overburdened Areas Map treats the impacts of "extraordinary events," such as the County's significant amount of Ozone alerts in the past four months. The Coalition suggests that any Overburdened Areas Map that seeks to inform EHD of the City and County's existing disproportionate health burdens of air pollution must include these events in order to ensure that the Map provides the most accurate representation of these disproportionate health burdens and environmental effects from air emissions on overburdened areas.

B. The Mountain View neighborhood should be included as an Overburdened Area in EHD's Overburdened Areas Map.

The Mountain View neighborhood is one of the most overburdened areas in Albuquerque and Bernalillo County. The Mountain View community consists of approximately 6,000 residents living in the South Valley of Albuquerque and Bernalillo County. Residents are predominantly Hispanic and working-class to low-income and, according to the United States Environmental Protection Agency's ("EPA") EJScreen, the Mountain View community is ranked within the 80th to 95th percentile both nationwide and statewide for residents identifying as people of color and residents with limited English proficiency.⁵ The Mountain View community is also home to several oil terminals, scrap yards, chemical storage facilities, the municipal sewage plant, and two Superfund sites, all while being downwind from Kirtland Air Force Base, Sandia National Laboratory, and the Albuquerque International Sunport.⁶ Moreover, the Centers for Disease Control and Prevention ranks the community region in the top percentiles in its

⁵ See *Mountain View is City's Industrial Sacrificial Zone*, ABQ Journal (June 28, 2021), Accessible here: https://www.abqjournal.com/news/mountain-view-is-citys-industrial-sacrifice-zone/article_fea747ab-0525-51cf-bda8-5c4fd74c0f7e.html. See also *87105 Demographics Summary*, New Mexico Demographics, [https://www.newmexico-demographics.com/87105-demographics#:~:text=The%20largest%2087105%20racial%2Fethnic,and%20American%20Indian%20\(4.0%25\),and%20\(87105\)Albuquerque,NewMexico,EPA'sEnvironmentalJusticeScreeningandMappingTool\(Version2.2\),https://ejscreen.epa.gov/mapper/](https://www.newmexico-demographics.com/87105-demographics#:~:text=The%20largest%2087105%20racial%2Fethnic,and%20American%20Indian%20(4.0%25),and%20(87105)Albuquerque,NewMexico,EPA'sEnvironmentalJusticeScreeningandMappingTool(Version2.2),https://ejscreen.epa.gov/mapper/).

⁶ Austin Fisher, *Albuquerque Plastic Fire Gives Air Regulators Opportunity 'to Make the Right Decision,'* SourceNM (Aug. 17, 2023), <https://sourcennm.com/2023/08/17/albuquerque-plastic-fire-gives-air-regulators-this-moment-in-history-to-make-the-right-decision/#:~:text=The%20Mountain%20View%20neighborhood%20and,facilities%2C%20and%20the%20sewage%20plant.>

Environmental Justice Index, Social Vulnerability and Environmental Burden indicators.⁷ Perhaps most notably, EPA has identified the census tract encompassing the Mountain View neighborhood as a designated disadvantaged community.⁸ EPA designates a census tract as overburdened if it is at or above the 90th percentile for expected agriculture loss rate OR expected building loss rate OR projected flood risk OR projected wildfire risk AND are at or above the 65th percentile for low income.⁹ Here, the Mountain View community meets several of these criteria; yet Mountain View has been inexplicably left out of the City’s overburdened areas identified in Map Version 0.1.

The Mountain View community is made up primarily of three census blockgroups, Blockgroup No. 350010040012 (“BG 1”), Blockgroup No. 350010040014 (“BG 2”), and Blockgroup No. 350010040013 (“BG 3”).

BG 1 is home to approximately 1,323 residents living within an area of 6.62 miles along I-25. 41% of the population reports speaking a language other than English at home, 78% identify as Hispanic or non-white, and EPA has identified the area as having a transportation access burden, as well as a food desert.¹⁰ Notably, the area ranks in the top 80th percentile compared to the rest of New Mexico for 10 of EPA’s 13 Environmental Justice Indexes, as well as in the 82nd percentile compared to the rest of the state for asthma rate, the 86th percentile for low income, and the 92nd percentile for less than high school education – all indicators we know exacerbate the health impacts of air pollution.¹¹

BG 2 is home to approximately 2,035 residents living in an area of 3.39 square miles, adjacent to BG 1. 47% of the residents are low income, 85% are residents of color, with 41% of residents reporting speaking a language other than English at home. Here, again, the area ranks in the 80th percentile or higher for 12 of EPA’s 13 Environmental Justice Indexes.¹²

⁷ Centers for Disease Control, *ATSDR Environmental Justice Index (EJI) Explorer*, August 24, 2023. Accessible at <https://onemap.cdc.gov/portal/apps/sites/#/eji-explorer>.

⁸ United States Environmental Protection Agency, *EJ Screen Community Report* [Census Tract 35001004001]. Reports included as Attachments 1 and 2.

⁹ *Id.*

¹⁰ See United States Environmental Protection Agency, *EJScreen Community Report* [BG1], https://ejscreen.epa.gov/mapper/ejscreen_SOE.aspx. Included here as Attachment 3.

¹¹ *Id.* (emphasis added).

¹² United States Environmental Protection Agency, *EJScreen Community Report* [BG 2]. Included here as Attachment 4 (emphasis added).

BG 3 is home to a population of 751 residents living in an area of approximately 3.75 square miles. 62% of the population is people of color, with 38% being low income and 41% speaking a language other than English at home. BG 3 is also in the 80th percentile or higher compared with the broader state for 3 of the 13 EPA environmental justice indices, in the 82nd percentile in asthma rates, and identified as a food desert and as having a transportation access burden.¹³

All three blockgroups thus experience high rates of both health impacts caused or contributed to by increased pollution in the area, as well as high rates of stressors that exacerbate those health impacts, when compared to the broader area of Albuquerque and Bernalillo County.

Beyond this, it is clear, when taking into account the lived experiences of residents in the area expressed during the Health, Environment and Equity Impacts rulemaking hearing held in December, 2023, that the Mountain View community faces disproportionate negative health burdens when compared to other areas in the City and the County.

Nora Garcia, member of the Mountain View Coalition and Mountain View Neighborhood Association stated, “The total cumulative impacts [of pollution in Mountain View] create[s] adverse environmental concerns, and it is injurious to the health, safety and welfare of the residents of the Mountain View community in Bernalillo County ... For decades, we have endured the hardships of these contaminating industries, overburdened with industrial waste, contaminating our air, water and land.”¹⁴

Diane Reese, resident of Albuquerque’s South Valley and Sierra Club representative, stated, “I live very close to the Mountain View area. Studies have shown higher levels of disease in these areas of our city, and cumulative impacts are an essential evaluation for any permit.”¹⁵

Lauro Silva, resident of Mountain View and member of the Mountain View Neighborhood Association, stated, “We have suffered from the environment contamination ... Our own daughter is on oxygen 24/7. She has 300-pound tanks of liquid oxygen that she has to live to survive ... I, myself, had open heart surgery 30 years ago. I have diabetes, high blood pressure, and a series of other things ... So some of these concerns that I have are definitely related to the air quality we have been researching and putting forth to you here today.”¹⁶

¹³ United States Environmental Protection Agency, *EJScreen Community Report* [BG 3]. Included here as Attachment 5.

¹⁴ AQCB Petition No. 2022-3, Transcript of Proceedings (hereinafter “HEEI Transcript”), Vol. 1, p. 298, lines 4-20.

¹⁵ *Id.* at 303, lines 10-13.

¹⁶ HEEI Transcript, Vol. 3 at p. 1063.

Dr. Sofia Martinez noted, “as a resident of the Mountain View Community for probably over 30 years, I was evacuated twice,” and later, after explaining health impacts she and her family dealt with while living there, went on to explain that, “in something like the 1960s, they found a well in the Mountain View Elementary School that had something like 700 [milligrams] of nitrogen per liter, when the state and U.S. legal is 10 milligrams per liter ... In Mountain View, you have groundwater that’s been poisoned. You have soil that’s been poisoned. Right now, there’s two active Superfund sites in the Mountain View and San Jose communities.”¹⁷

Despite the information above, EHD’s Overburdened Areas Map Version 0.1 inexplicably fails to include the Mountain View neighborhood as an overburdened area. The Mountain View Coalition urges EHD to include Mountain View, and all other communities identified by Albuquerque and Bernalillo County residents as overburdened areas on any Overburdened Areas Map because the lived-experience of community members, and an understanding that community members are experts and full partners in the research of their community and their experience, not only advances the rigor, relevance and reach of any research and mapping performed by EHD,¹⁸ but also ensures that the Overburdened Areas Map achieves its goals of accurately reflecting areas in the City and County that need additional protection from the burdens of air pollution.

II. EHD’s mapping process needs to consider the unique factors that impact Albuquerque and Bernalillo County.

In creating Overburdened Areas Map Version 0.1, EHD appears to have relied on a formula to determine an overburdened area index score for each census blockgroup, based, according to EHD’s presentation, on similar environmental tools used by other states including California, Washington, and Connecticut.¹⁹

¹⁷ HEEI Transcript, Vol. 2 at p. 699 lines 9-14.

¹⁸ *Petitioners’ Notice of Intent to Present Technical Testimony, Ex. 3* at 20, AQCB Petition No. 2022-03, Dkt. No. 180 (Nov. 17, 2023). Accessible here: <https://www.dropbox.com/scl/fo/ftzpfvuwnpmwu7vg492o/AJVv1VSwOybfPMg5duhgY?dl=0&e=3&preview=180.+Petitioners%27+Notice+of+Intent+to+Present+Technical+Testimony.pdf&rlkey=mk8ox5s9vihwhzt668d7s8xy0> (last viewed September 3, 2024).

¹⁹ City of Albuquerque Environmental Health Department, *Overburdened Areas Map: Version 0.1 Public Consultation Series: Initial Webinar* (August 1, 2024). Accessible here: https://www.cabq.gov/environmentalhealth/documents/2024-08-01_obav01_webinaraccessibility.pdf (last viewed September 3, 2024).

EHD’s formula is consistent with a general formula relied on by other states across the Country: Risk = Threat x Vulnerability.²⁰ Generally speaking, if “Risk” is to be the overall overburdened area or environmental justice index score, “Threat” includes both environmental effects and environmental exposures or sources, while “Vulnerability” includes both socioeconomic factors and population sensitivity.²¹

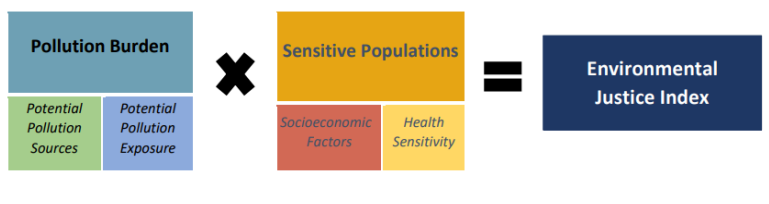


Figure 3: The components of CT EJ Screening model.

22

While the use of such a formula is consistent with what has been done in other states developing overburdened areas maps, it is important to point out that each state’s formula is unique. Each state, in developing its own tool, has made decisions in terms of the weight given to certain factors, as well as the averaging of factors, that is ultimately a policy decision left up to each entity creating a map of overburdened areas. Connecticut, for example, chose to give the “Potential Pollution Sources” score half the weight of the Potential Pollution Exposures score.²³

$$\text{Pollution Burden} = \frac{(0.5 \times \text{Average of PPS}) + (\text{Average of PPE})}{1.5}, \quad (3)$$

$$\text{Sensitive Population} = \frac{(\text{Average SF}) + (\text{Average of HS})}{2}, \quad (4)$$

Notably, each formula EHD purports to have relied on also includes the consideration of “Potential Pollution Sources,” a factor not included in EHD’s Overburdened Area Index score.

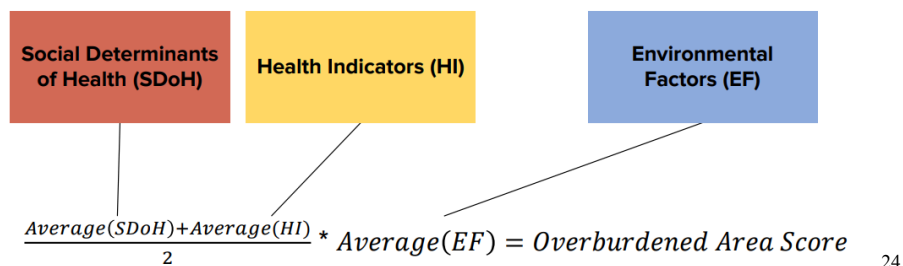
²⁰ See, e.g. Connecticut Institute for Resilience and Climate Adaptation, *Connecticut Environmental Justice Screening Tool, Final Report Version 2.0*, at 30 (August 2023). Accessible here: https://connecticut-environmental-justice-circa.media.uconn.edu/wp-content/uploads/sites/3393/2023/08/FinalReport_ver2.0.pdf (last viewed September 3, 2024). See also California Environmental Protection Agency, Office of Environmental Health Hazard Assessment, *CalEnviroScreen 4.0 Report* at 12 (October 2021). Accessible here: <https://oehha.ca.gov/media/downloads/calenviroscreen/report/calenviroscreen40reportf2021.pdf> (last viewed September 3, 2024); University of Washington Department of Environmental & Occupational Health Sciences, *Washington Environmental Health Disparities Map: Cumulative Impacts of Environmental Health Risk Factors Across Communities of Washington State Technical Report* at 16 (July 2022). Accessible here: https://doh.wa.gov/sites/default/files/2022-07/311-011-EHD-Map-Tech-Report_0.pdf (last viewed September 3, 2024).

²¹ *Id.*

²² *Connecticut Environmental Justice Screening Tool, Final Report Version 2.0*, at 30.

²³ *Id.* at 37; See also *CalEnviroScreen 4.0 Report* at 13.

As shown below, EHD’s formula does not include a score for pollution sources in any given census blockgroup.



Thus, if EHD is to rely on a formula similar to those used by other states, the Mountain View Coalition requests that EHD include both environmental exposure indicators, such as ozone concentrations in the air, PM2.5 concentrations in the air, and Diesel particulate matter emissions, as well as potential pollution sources, which include indicators such as the number of toxic cleanup sites in any given census blockgroup; hazardous waste facilities and generators in the census blockgroup; solid waste sites and facilities in the census blockgroup; and, in the case of Albuquerque and Bernalillo County, number of permitted facilities within each census blockgroup.

EHD has an opportunity to develop a map that accurately represents communities’ lived experience in Albuquerque and Bernalillo County. Unfortunately, the Overburdened Areas Map Version 0.1 does not take into account the burdens and threats in those communities most overburdened, and therefore does not provide a complete, holistic picture of the public health burdens the communities face.

Because EHD has discretion in deciding both what factors should be considered in determining whether a community is overburdened, as well as in determining what weight each factor is given, the Mountain View Coalition urges EHD to listen to impacted communities and residents in Albuquerque and Bernalillo County, giving their lived experience in overburdened areas significant weight and value when identifying overburdened areas in the City and the County.

The Mountain View Coalition notes that having a single threshold to determine whether a community is overburdened does not take into account unique local conditions, and areas just below the cutoff may still experience significant environmental burdens. Having a single threshold, such as a percentile based on equally-weighted averages of health, environmental and social indicators, may exclude certain communities that are still overburdened but fall slightly

²⁴ EHD *Overburdened Areas Map: Version 0.1 Public Consultation Series: Initial Webinar* (August 1, 2024).

below the cutoff.²⁵ Thus, communities near the cutoff may be at risk of being overlooked or deprioritized for resources and interventions, despite facing real environmental challenges. Overall, using a single threshold oversimplifies the complexity of environmental justice issues,²⁶ and the Mountain View Coalition urges EHD to give great weight to residents' lived experiences when determining whether an area in Albuquerque or Bernalillo County is overburdened.

III. Note on EHD's community collaboration.

While the Mountain View Coalition appreciates EHD's attempt at community collaboration, the Mountain View Coalition seeks an explanation from EHD as to why, during this initial attempt at seeking community feedback on the Overburdened Areas Map Version 0.1, EHD intentionally neglected to include Mountain View as a location at which to hold any community input session.

In addition, the MVC recommends EHD make presentations clearer, less technical, and provide better context to these community engagement sessions, as EHD's audience may not, and likely does not, have the technical expertise or background understanding of the mapping processes and the need for such a map. The Coalition suggests that EHD make clear to the public what neighborhoods coincide with overburdened area census blockgroups on the map, either by labeling them clearly on the overburdened areas map and/or creating a map that would allow a member of the public to input their address into the map in order to understand whether they live in an overburdened area. The MVC further recommends that EHD include a version of the map that is in Spanish, as many residents of overburdened areas speak Spanish rather than English at home. Furthermore, if EHD has not directly reached out to the Pueblo of Isleta to provide regular updates on the mapping process, the MVC suggests EHD do so, and ensure that Isleta Pueblo is continually informed of and engaged with the mapping development process.

²⁵ Notably, this sort of situation is exactly what prompted the Mountain View Coalition, and a community coalition before that, to petition the Air Board to adopt a cumulative impacts rule in the first place, because existing air quality measures and standards do not adequately protect the health of those living in overburdened areas. *See, e.g.* United States Environmental Protection Agency, "EPA to Reexamine Health Standards for Harmful Soot that Previous Administration Left Unchanged." June 10, 2021. Accessible here: <https://www.epa.gov/newsreleases/epa-reexamine-health-standards-harmful-soot-previous-administration-left-unchanged> (last viewed September 3, 2024). Moreover, any map developed by EHD should ensure that communities that live with disproportionate pollution burdens, such as Mountain View, are not excluded from consideration as overburdened areas simply because the area is, for example, at the 79th percentile rather than the 80th – the data should be parsed for overinclusiveness instead of underinclusiveness to ensure any map relied on by EHD adequately reflects and protects residents of overburdened areas.

²⁶ *Petitioners' Notice of Intent to Present Technical Testimony, Ex. 1A* at 14, AQCB Petition No. 2022-03, Dkt. No. 180 (Nov. 17, 2023). Accessible here: <https://www.dropbox.com/scl/fo/ftzpfvuwnpmwu7vg492o/AJVv1VSwOybEfxPMg5duhgY?dl=0&e=3&preview=180+Petitioners%27+Notice+of+Intent+to+Present+Technical+Testimony.pdf&rlkey=mk8ox5s9vihwhzt668d7s8xy0> (last viewed September 3, 2024).

The Coalition also implores EHD build trust with the community by thoroughly explaining data sources EHD relies on in making the Overburdened Areas Map, as well as the qualifications and experience of EHD employees working on developing the Map, in order for residents to have a better understanding of why certain data are used, how the data are used, and why the decisions made by EHD in developing the Overburdened Areas Map are reasonable. In addition, the MVC recommends that EHD consult with a public health expert, like PSE Healthy Energy,²⁷ in order to ensure that the mapping process has integrity and that factors and indicators that are most reflective of the public health burdens in the community are included in EHD's determination of overburdened areas.

Ultimately, the Mountain View Coalition strongly urges EHD to engage with and collaborate with residents of impacted and overburdened communities in a meaningful way, providing additional time at each session to allow for public comments and giving residents of overburdened communities more notice of the mapping sessions and preparation time ahead of the sessions, in order to ensure that the Overburdened Areas Map is reflective of communities' lived experience.

Respectfully,

/s/ Maslyn Locke

Maslyn Locke, Senior Staff Attorney
Eric Jantz, Legal Director
Kacey Hovden, Staff Attorney
New Mexico Environmental Law Center
P.O. Box 12931
Albuquerque, NM 87195
mlocke@nmelc.org
ejantz@nmelc.org
khovden@nmelc.org

/s/ Marla Painter

Marla Painter, President
Mountain View Community Action



Annie Montes, Executive Director
Friends of the Valle de Oro

²⁷ <https://www.psehealthyenergy.org/>.

/s/ Genevieve Chavez Mitchell

Genevieve Chavez Mitchell, President
Mountain View Neighborhood Association

/s/ Nora Garcia

Nora Garcia, Board Member
Mountain View Neighborhood Association

Courtesy Copies:

Lauren Keefe, City Attorney, lkeefe@cabq.gov

Nathan Mulvihill, City Attorney, nmulvihill@cabq.gov

Antionette Sedillo Lopez, Attorney for the Air Quality Control Board, asedillolopez@gmail.com

Joseph Galewsky, Chair, Air Quality Control Board, galewsky@unm.edu

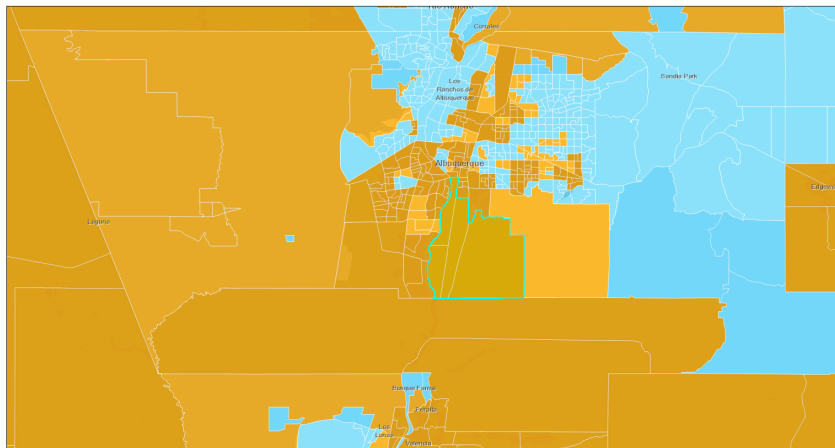


EJScreen Community Report

This report provides environmental and socioeconomic information for user-defined areas, and combines that data into environmental justice and supplemental indexes.

South Valley, NM

Tract: 35001004001
 Population: 4,997
 Area in square miles: 38.44

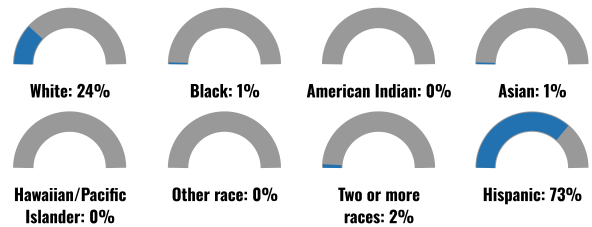


September 3, 2024
 EPA IRA Disadvantaged Communities 2.0
 Justice40 (CEJST)
 Not Disadvantaged
 Disadvantaged
 Partially Disadvantaged
 Project 1
 Project 2
 0 3 6 9 12 mi
 0 4.75 9.5 19 km
 Bernalillo County, NM, City of Albuquerque, Bureau of Land Management, Esri, HERE, Garmin, USGS, EPA, NPS, EPA, HERE, etc.

COMMUNITY INFORMATION



BREAKDOWN BY RACE



BREAKDOWN BY AGE

LANGUAGES SPOKEN AT HOME

| LANGUAGE | PERCENT |
|----------------------------------|---------|
| English | 59% |
| Spanish | 39% |
| Russian, Polish, or Other Slavic | 2% |
| Total Non-English | 41% |

EJScreen Community Report



LIMITED ENGLISH SPEAKING BREAKDOWN



Notes: Numbers may not sum to totals due to rounding. Hispanic population can be of any race. Source: U.S. Census Bureau, American Community Survey (ACS) 2018-2022. Life expectancy data comes from the Centers for Disease Control.

Report for Tract: 35001004001

Report produced September 3, 2024 using EJScreen Version 2.3

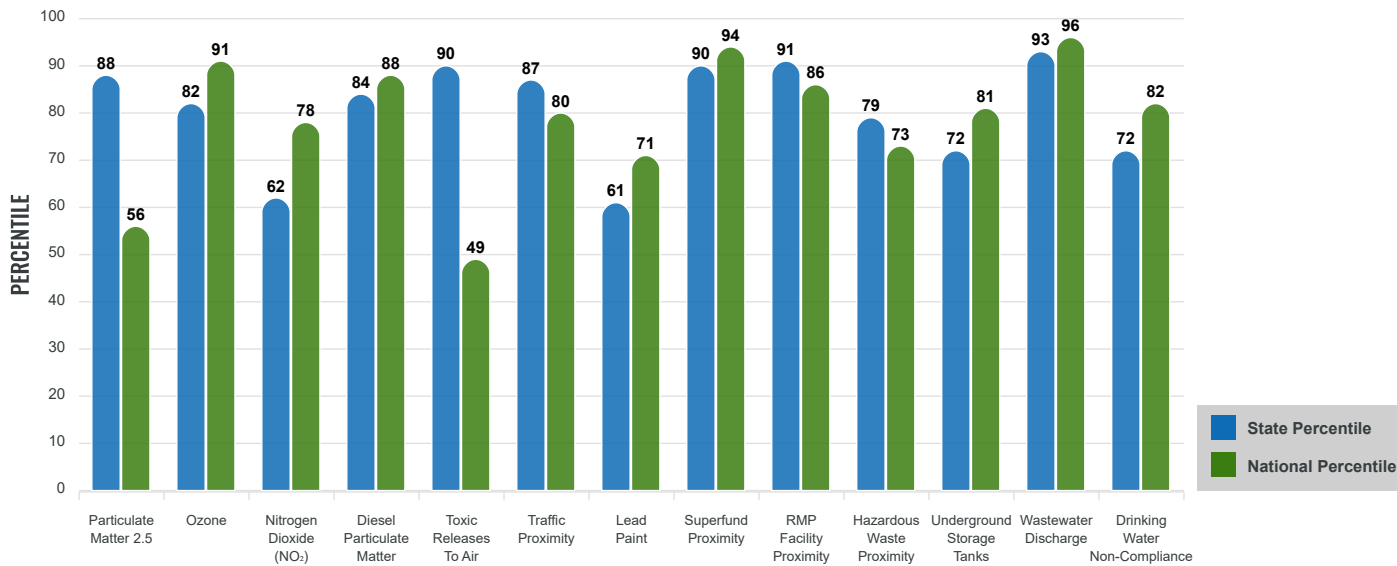
Environmental Justice & Supplemental Indexes

The environmental justice and supplemental indexes are a combination of environmental and socioeconomic information. There are thirteen EJ indexes and supplemental indexes in EJScreen reflecting the 13 environmental indicators. The indexes for a selected area are compared to those for all other locations in the state or nation. For more information and calculation details on the EJ and supplemental indexes, please visit the [EJScreen website](#).

EJ INDEXES

The EJ indexes help users screen for potential EJ concerns. To do this, the EJ index combines data on low income and people of color populations with a single environmental indicator.

EJ INDEXES FOR THE SELECTED LOCATION

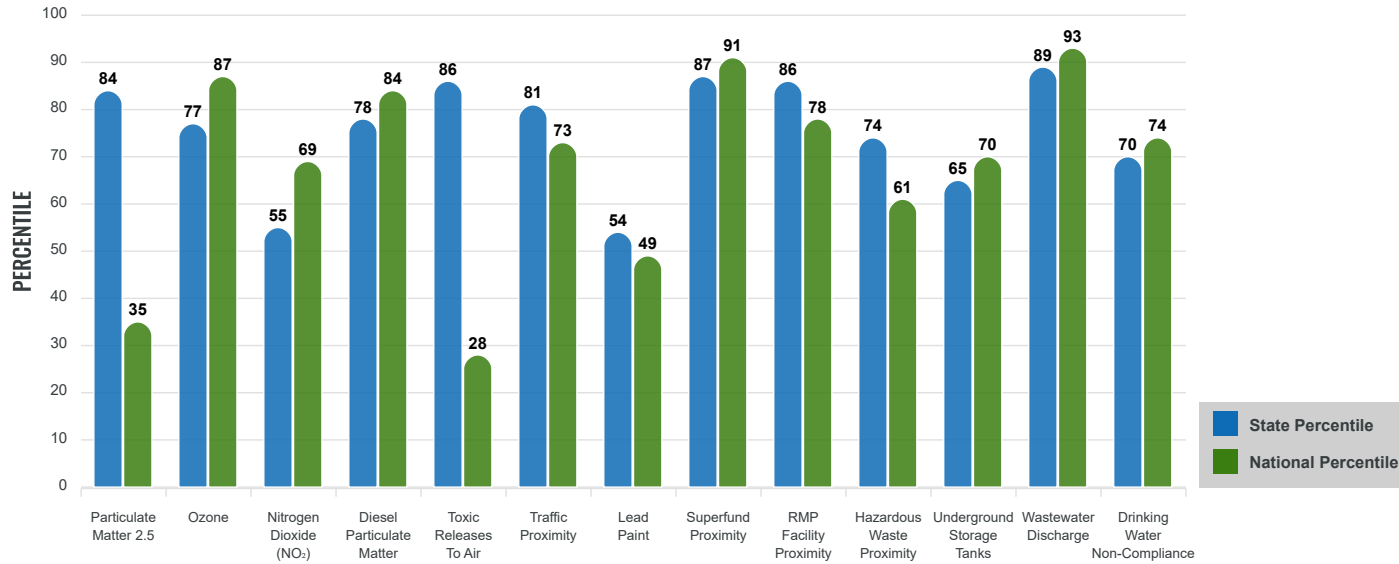


SUPPLEMENTAL INDEXES

The supplemental indexes offer a different perspective on community-level vulnerability. They combine data on percent low income, percent persons with disabilities, percent less than high school education, percent limited English speaking, and percent low life expectancy with a single environmental indicator.



SUPPLEMENTAL INDEXES FOR THE SELECTED LOCATION



Report for Tract: 35001004001

Report produced September 3, 2024 using EJScreen Version 2.3

EJScreen Environmental and Socioeconomic Indicators Data

| SELECTED VARIABLES | VALUE | STATE AVERAGE | PERCENTILE IN STATE | USA AVERAGE | PERCENTILE IN USA |
|---|-----------|---------------|---------------------|-------------|-------------------|
| ENVIRONMENTAL BURDEN INDICATORS | | | | | |
| Particulate Matter 2.5 (µg/m ³) | 7.34 | 6.11 | 82 | 8.45 | 25 |
| Ozone (ppb) | 66.8 | 65.3 | 65 | 61.8 | 77 |
| Nitrogen Dioxide (NO ₂) (ppbv) | 7.7 | 8.1 | 39 | 7.8 | 51 |
| Diesel Particulate Matter (µg/m ³) | 0.267 | 0.187 | 75 | 0.191 | 79 |
| Toxic Releases to Air (toxicity-weighted concentration) | 66 | 29 | 92 | 4,600 | 20 |
| Traffic Proximity (daily traffic count/distance to road) | 1,100,000 | 730,000 | 77 | 1,700,000 | 56 |
| Lead Paint (% Pre-1960 Housing) | 0.15 | 0.19 | 59 | 0.3 | 42 |
| Superfund Proximity (site count/km distance) | 1.1 | 0.34 | 93 | 0.39 | 92 |
| RMP Facility Proximity (facility count/km distance) | 0.65 | 0.2 | 88 | 0.57 | 70 |
| Hazardous Waste Proximity (facility count/km distance) | 0.98 | 1.2 | 63 | 3.5 | 44 |
| Underground Storage Tanks (count/km ²) | 2 | 2.8 | 66 | 3.6 | 63 |
| Wastewater Discharge (toxicity-weighted concentration/m distance) | 330000 | 990000 | 96 | 700000 | 99 |
| Drinking Water Non-Compliance (points) | 0.086 | 5.6 | 71 | 2.2 | 74 |
| SOCIOECONOMIC INDICATORS | | | | | |
| Demographic Index USA | 2.32 | N/A | N/A | 1.34 | 84 |
| Supplemental Demographic Index USA | 1.92 | N/A | N/A | 1.64 | 70 |
| Demographic Index State | 2.63 | 2.16 | 67 | N/A | N/A |
| Supplemental Demographic Index State | 1.65 | 1.62 | 55 | N/A | N/A |
| People of Color | 76% | 62% | 67 | 40% | 81 |
| Low Income | 47% | 39% | 64 | 30% | 78 |
| Unemployment Rate | 7% | 6% | 65 | 6% | 72 |
| Limited English Speaking Households | 3% | 6% | 58 | 5% | 70 |
| Less Than High School Education | 17% | 14% | 69 | 11% | 77 |
| Under Age 5 | 7% | 5% | 70 | 5% | 67 |
| Over Age 64 | 15% | 20% | 40 | 18% | 45 |

*Diesel particulate matter index is from the EPA's Air Toxics Data Update, which is the Agency's ongoing, comprehensive evaluation of air toxics in the United States. This effort aims to prioritize air toxics, emission sources, and locations of interest for further study. It is important to remember that the air toxics data presented here provide broad estimates of health risks over geographic areas of the country, not definitive risks to specific individuals or locations. More information on the Air Toxics Data Update can be found at: <https://www.epa.gov/haps/air-toxics-data-update>.

Sites reporting to EPA within defined area:

Superfund 3

Other community features within defined area:

Schools 2

| | |
|--|-----|
| Hazardous Waste, Treatment, Storage, and Disposal Facilities | 0 |
| Water Dischargers | |
| . | 283 |
| Air Pollution | 90 |
| Brownfields | 0 |
| Toxic Release Inventory | 14 |

| | |
|-------------------------|---|
| Hospitals | 0 |
| Places of Worship | 1 |

Other environmental data:

| | |
|--------------------------|-----|
| Air Non-attainment | No |
| Impaired Waters | Yes |

| | |
|--|-----|
| Selected location contains American Indian Reservation Lands* | No |
| Selected location contains a "Justice40 (CEJST)" disadvantaged community | Yes |
| Selected location contains an EPA IRA disadvantaged community | Yes |

Report for Tract: 35001004001

Report produced September 3, 2024 using EJScreen Version 2.3

EJScreen Environmental and Socioeconomic Indicators Data

HEALTH INDICATORS

| INDICATOR | VALUE | STATE AVERAGE | STATE PERCENTILE | US AVERAGE | US PERCENTILE |
|---------------------------|-------|---------------|------------------|------------|---------------|
| Low Life Expectancy | 20% | 19% | 54 | 20% | 54 |
| Heart Disease | 5.8 | 5.9 | 45 | 5.8 | 53 |
| Asthma | 12 | 11.2 | 82 | 10.3 | 89 |
| Cancer | 4.7 | 6.1 | 17 | 6.4 | 17 |
| Persons with Disabilities | 13.8% | 17.1% | 36 | 13.7% | 56 |

CLIMATE INDICATORS

| INDICATOR | VALUE | STATE AVERAGE | STATE PERCENTILE | US AVERAGE | US PERCENTILE |
|---------------|-------|---------------|------------------|------------|---------------|
| Flood Risk | 0% | 9% | 21 | 12% | 13 |
| Wildfire Risk | 83% | 58% | 50 | 14% | 89 |

CRITICAL SERVICE GAPS

| INDICATOR | VALUE | STATE AVERAGE | STATE PERCENTILE | US AVERAGE | US PERCENTILE |
|------------------------------|-------|---------------|------------------|------------|---------------|
| Broadband Internet | 17% | 20% | 51 | 13% | 71 |
| Lack of Health Insurance | 16% | 10% | 83 | 9% | 86 |
| Housing Burden | Yes | N/A | N/A | N/A | N/A |
| Transportation Access Burden | Yes | N/A | N/A | N/A | N/A |
| Food Desert | Yes | N/A | N/A | N/A | N/A |

Report for Tract: 35001004001

Report produced September 3, 2024 using EJScreen Version 2.3

www.epa.gov/ejscreen

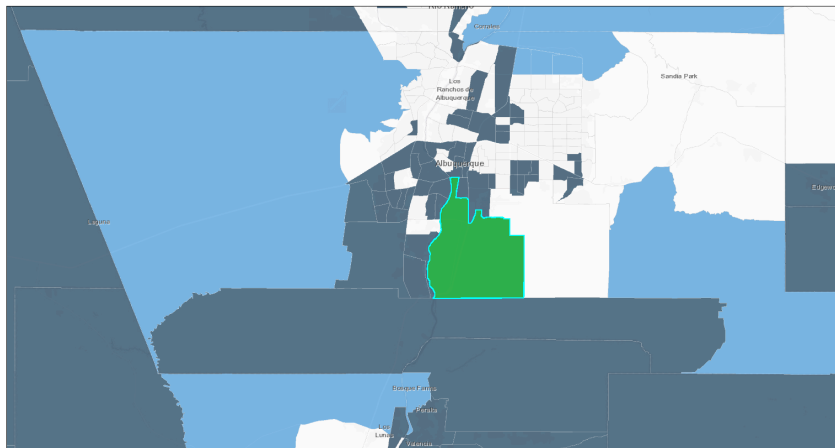


EJScreen Community Report

This report provides environmental and socioeconomic information for user-defined areas, and combines that data into environmental justice and supplemental indexes.

South Valley, NM

Tract: 35001004001
 Population: 4,997
 Area in square miles: 38.44

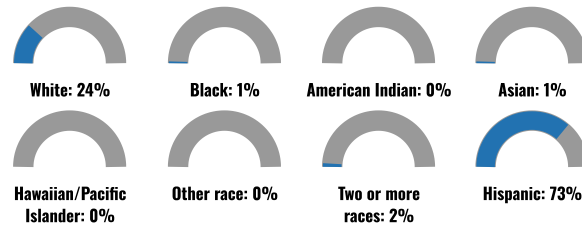


September 3, 2024
 Project 2 Justice40 (GEJST) Partially Disadvantaged
 Project 1 Disadvantaged Not Disadvantaged
 1:288,895
 0 3 6 9.5 12 mi
 0 4.75 9.5 19 km
 Bernalillo County, NM; City of Albuquerque; Bureau of Land Management; Env. HSE; Geom. USGS; EPA; WPA; Env. HSE; EPA

COMMUNITY INFORMATION



BREAKDOWN BY RACE



BREAKDOWN BY AGE

LANGUAGES SPOKEN AT HOME

| LANGUAGE | PERCENT |
|----------------------------------|---------|
| English | 59% |
| Spanish | 39% |
| Russian, Polish, or Other Slavic | 2% |
| Total Non-English | 41% |

EJScreen Community Report



LIMITED ENGLISH SPEAKING BREAKDOWN



Notes: Numbers may not sum to totals due to rounding. Hispanic population can be of any race. Source: U.S. Census Bureau, American Community Survey (ACS) 2018-2022. Life expectancy data comes from the Centers for Disease Control.

Report for Tract: 35001004001

Report produced September 3, 2024 using EJScreen Version 2.3

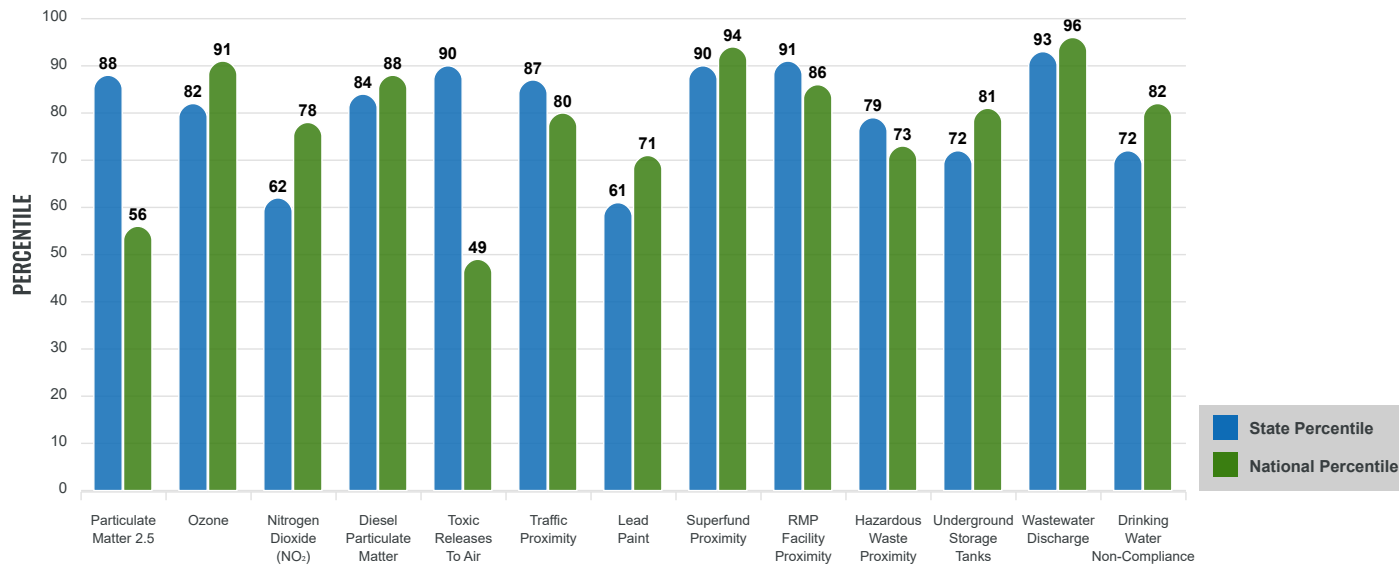
Environmental Justice & Supplemental Indexes

The environmental justice and supplemental indexes are a combination of environmental and socioeconomic information. There are thirteen EJ indexes and supplemental indexes in EJScreen reflecting the 13 environmental indicators. The indexes for a selected area are compared to those for all other locations in the state or nation. For more information and calculation details on the EJ and supplemental indexes, please visit the [EJScreen website](#).

EJ INDEXES

The EJ indexes help users screen for potential EJ concerns. To do this, the EJ index combines data on low income and people of color populations with a single environmental indicator.

EJ INDEXES FOR THE SELECTED LOCATION

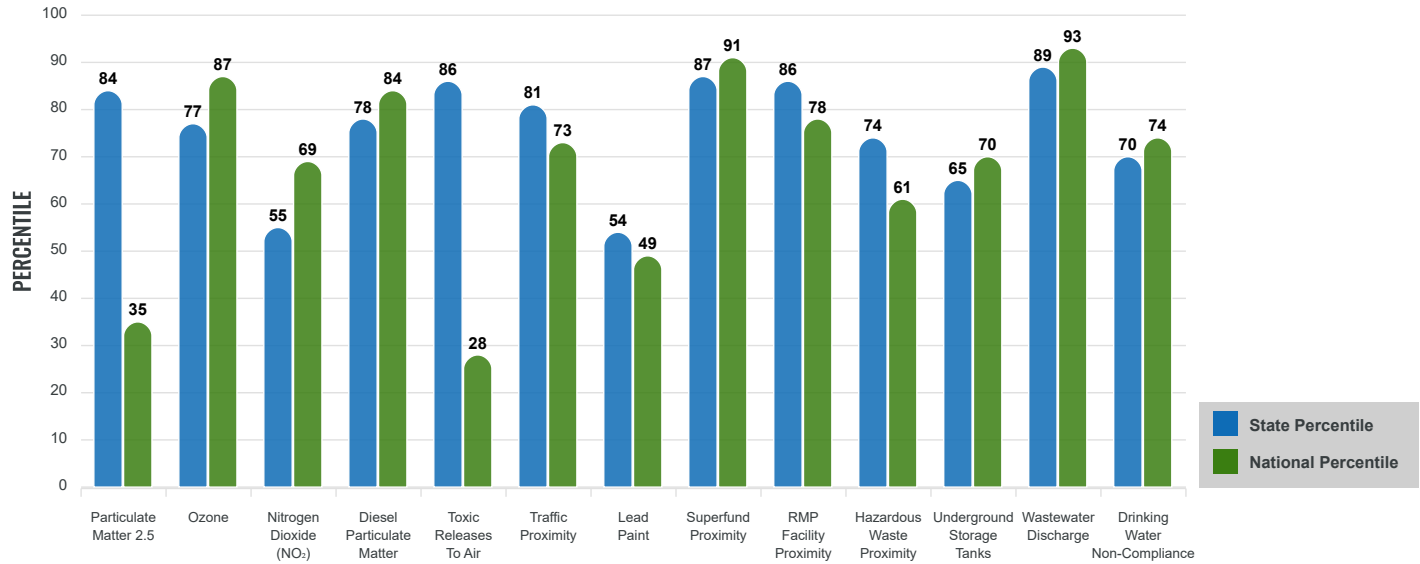


SUPPLEMENTAL INDEXES

The supplemental indexes offer a different perspective on community-level vulnerability. They combine data on percent low income, percent persons with disabilities, percent less than high school education, percent limited English speaking, and percent low life expectancy with a single environmental indicator.



SUPPLEMENTAL INDEXES FOR THE SELECTED LOCATION



Report for Tract: 35001004001

Report produced September 3, 2024 using EJScreen Version 2.3

EJScreen Environmental and Socioeconomic Indicators Data

| SELECTED VARIABLES | VALUE | STATE AVERAGE | PERCENTILE IN STATE | USA AVERAGE | PERCENTILE IN USA |
|---|-----------|---------------|---------------------|-------------|-------------------|
| ENVIRONMENTAL BURDEN INDICATORS | | | | | |
| Particulate Matter 2.5 (µg/m ³) | 7.34 | 6.11 | 82 | 8.45 | 25 |
| Ozone (ppb) | 66.8 | 65.3 | 65 | 61.8 | 77 |
| Nitrogen Dioxide (NO ₂) (ppbv) | 7.7 | 8.1 | 39 | 7.8 | 51 |
| Diesel Particulate Matter (µg/m ³) | 0.267 | 0.187 | 75 | 0.191 | 79 |
| Toxic Releases to Air (toxicity-weighted concentration) | 66 | 29 | 92 | 4,600 | 20 |
| Traffic Proximity (daily traffic count/distance to road) | 1,100,000 | 730,000 | 77 | 1,700,000 | 56 |
| Lead Paint (% Pre-1960 Housing) | 0.15 | 0.19 | 59 | 0.3 | 42 |
| Superfund Proximity (site count/km distance) | 1.1 | 0.34 | 93 | 0.39 | 92 |
| RMP Facility Proximity (facility count/km distance) | 0.65 | 0.2 | 88 | 0.57 | 70 |
| Hazardous Waste Proximity (facility count/km distance) | 0.98 | 1.2 | 63 | 3.5 | 44 |
| Underground Storage Tanks (count/km ²) | 2 | 2.8 | 66 | 3.6 | 63 |
| Wastewater Discharge (toxicity-weighted concentration/m distance) | 330000 | 990000 | 96 | 700000 | 99 |
| Drinking Water Non-Compliance (points) | 0.086 | 5.6 | 71 | 2.2 | 74 |
| SOCIOECONOMIC INDICATORS | | | | | |
| Demographic Index USA | 2.32 | N/A | N/A | 1.34 | 84 |
| Supplemental Demographic Index USA | 1.92 | N/A | N/A | 1.64 | 70 |
| Demographic Index State | 2.63 | 2.16 | 67 | N/A | N/A |
| Supplemental Demographic Index State | 1.65 | 1.62 | 55 | N/A | N/A |
| People of Color | 76% | 62% | 67 | 40% | 81 |
| Low Income | 47% | 39% | 64 | 30% | 78 |
| Unemployment Rate | 7% | 6% | 65 | 6% | 72 |
| Limited English Speaking Households | 3% | 6% | 58 | 5% | 70 |
| Less Than High School Education | 17% | 14% | 69 | 11% | 77 |
| Under Age 5 | 7% | 5% | 70 | 5% | 67 |
| Over Age 64 | 15% | 20% | 40 | 18% | 45 |

*Diesel particulate matter index is from the EPA's Air Toxics Data Update, which is the Agency's ongoing, comprehensive evaluation of air toxics in the United States. This effort aims to prioritize air toxics, emission sources, and locations of interest for further study. It is important to remember that the air toxics data presented here provide broad estimates of health risks over geographic areas of the country, not definitive risks to specific individuals or locations. More information on the Air Toxics Data Update can be found at: <https://www.epa.gov/haps/air-toxics-data-update>.

Sites reporting to EPA within defined area:

Superfund 3

Other community features within defined area:

Schools 2

| | |
|--|-----|
| Hazardous Waste, Treatment, Storage, and Disposal Facilities | 0 |
| Water Dischargers | |
| . | 283 |
| Air Pollution | 90 |
| Brownfields | 0 |
| Toxic Release Inventory | 14 |

| | |
|-------------------------|---|
| Hospitals | 0 |
| Places of Worship | 1 |

Other environmental data:

| | |
|--------------------------|-----|
| Air Non-attainment | No |
| Impaired Waters | Yes |

| | |
|--|-----|
| Selected location contains American Indian Reservation Lands* | No |
| Selected location contains a "Justice40 (CEJST)" disadvantaged community | Yes |
| Selected location contains an EPA IRA disadvantaged community | Yes |

Report for Tract: 35001004001

Report produced September 3, 2024 using EJScreen Version 2.3

EJScreen Environmental and Socioeconomic Indicators Data

HEALTH INDICATORS

| INDICATOR | VALUE | STATE AVERAGE | STATE PERCENTILE | US AVERAGE | US PERCENTILE |
|---------------------------|-------|---------------|------------------|------------|---------------|
| Low Life Expectancy | 20% | 19% | 54 | 20% | 54 |
| Heart Disease | 5.8 | 5.9 | 45 | 5.8 | 53 |
| Asthma | 12 | 11.2 | 82 | 10.3 | 89 |
| Cancer | 4.7 | 6.1 | 17 | 6.4 | 17 |
| Persons with Disabilities | 13.8% | 17.1% | 36 | 13.7% | 56 |

CLIMATE INDICATORS

| INDICATOR | VALUE | STATE AVERAGE | STATE PERCENTILE | US AVERAGE | US PERCENTILE |
|---------------|-------|---------------|------------------|------------|---------------|
| Flood Risk | 0% | 9% | 21 | 12% | 13 |
| Wildfire Risk | 83% | 58% | 50 | 14% | 89 |

CRITICAL SERVICE GAPS

| INDICATOR | VALUE | STATE AVERAGE | STATE PERCENTILE | US AVERAGE | US PERCENTILE |
|------------------------------|-------|---------------|------------------|------------|---------------|
| Broadband Internet | 17% | 20% | 51 | 13% | 71 |
| Lack of Health Insurance | 16% | 10% | 83 | 9% | 86 |
| Housing Burden | Yes | N/A | N/A | N/A | N/A |
| Transportation Access Burden | Yes | N/A | N/A | N/A | N/A |
| Food Desert | Yes | N/A | N/A | N/A | N/A |

Report for Tract: 35001004001

Report produced September 3, 2024 using EJScreen Version 2.3

www.epa.gov/ejscreen



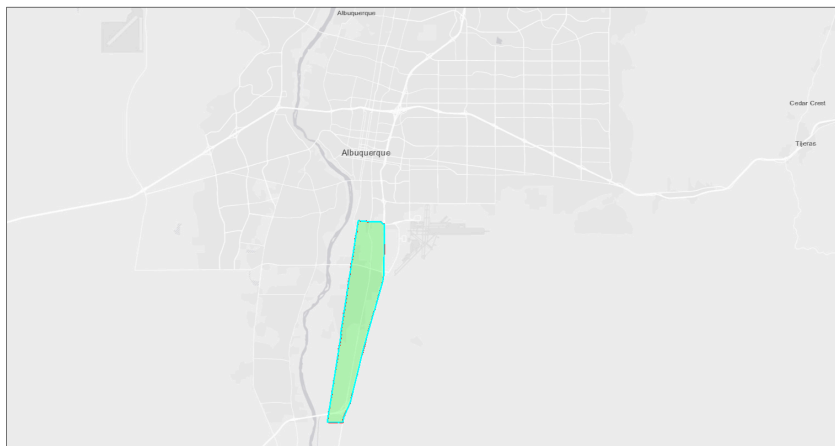
EJScreen Community Report

This report provides environmental and socioeconomic information for user-defined areas, and combines that data into environmental justice and supplemental indexes.

Attachment 3

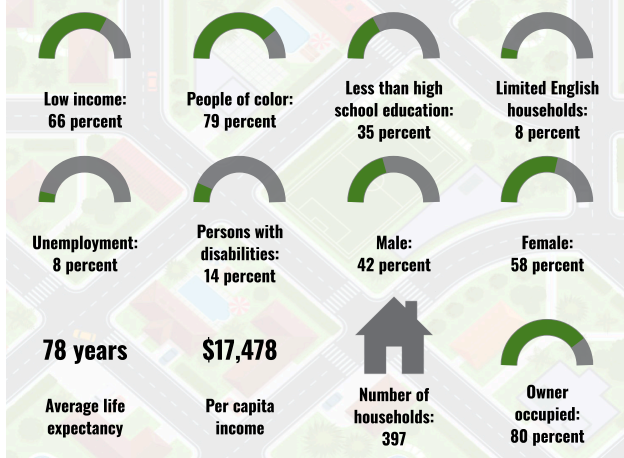
South Valley, NM

Blockgroup: 350010040012
 Population: 1,323
 Area in square miles: 6.62

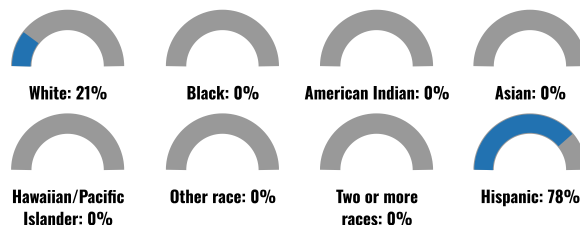


August 29, 2024
 Project 1
 1:144,448
 0 1.5 3 4.5 6 9 km
 0 1.5 3 4.5 6 mi
Bernalillo County, NM; City of Albuquerque; Bureau of Land Management; Texas Parks & Wildlife; DoH; HERE; Garmin; Google; SDA; VRS; Esri; HERE; ICF

COMMUNITY INFORMATION



BREAKDOWN BY RACE



BREAKDOWN BY AGE

LANGUAGES SPOKEN AT HOME

| LANGUAGE | PERCENT |
|----------------------------------|---------|
| English | 59% |
| Spanish | 39% |
| Russian, Polish, or Other Slavic | 2% |
| Total Non-English | 41% |

EJScreen Community Report



LIMITED ENGLISH SPEAKING BREAKDOWN



Notes: Numbers may not sum to totals due to rounding. Hispanic population can be of any race. Source: U.S. Census Bureau, American Community Survey (ACS) 2018-2022. Life expectancy data comes from the Centers for Disease Control.

Report for Blockgroup: 350010040012

Report produced August 29, 2024 using EJScreen Version 2.3

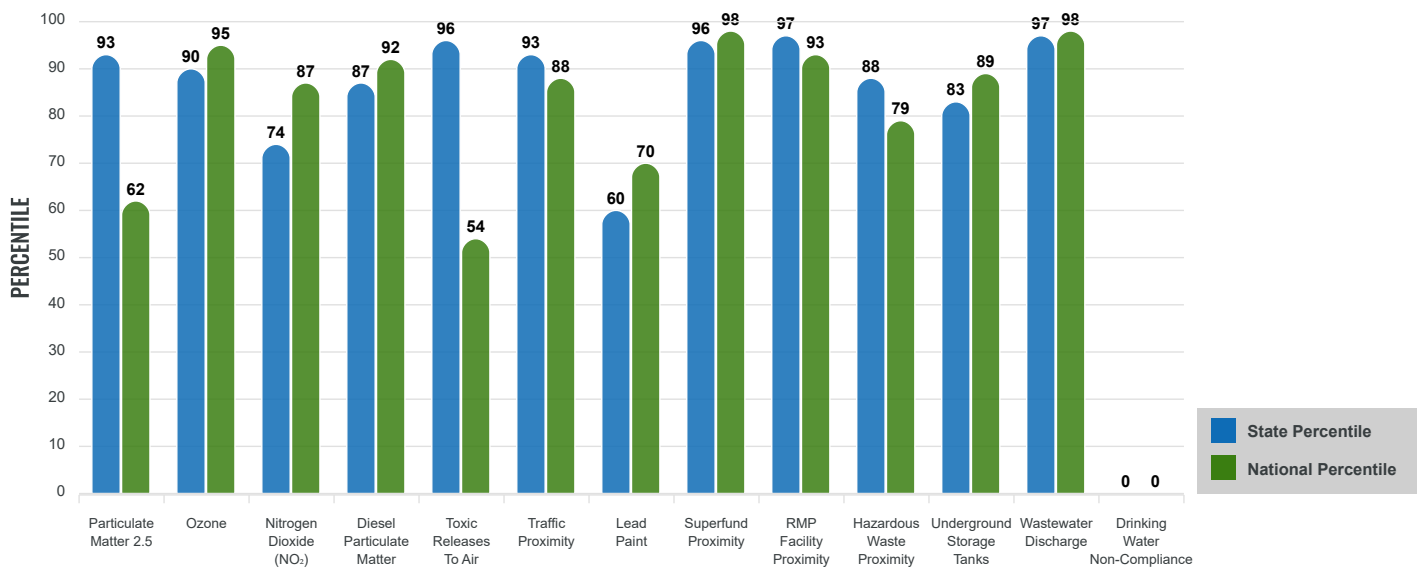
Environmental Justice & Supplemental Indexes

The environmental justice and supplemental indexes are a combination of environmental and socioeconomic information. There are thirteen EJ indexes and supplemental indexes in EJScreen reflecting the 13 environmental indicators. The indexes for a selected area are compared to those for all other locations in the state or nation. For more information and calculation details on the EJ and supplemental indexes, please visit the [EJScreen website](#).

EJ INDEXES

The EJ indexes help users screen for potential EJ concerns. To do this, the EJ index combines data on low income and people of color populations with a single environmental indicator.

EJ INDEXES FOR THE SELECTED LOCATION

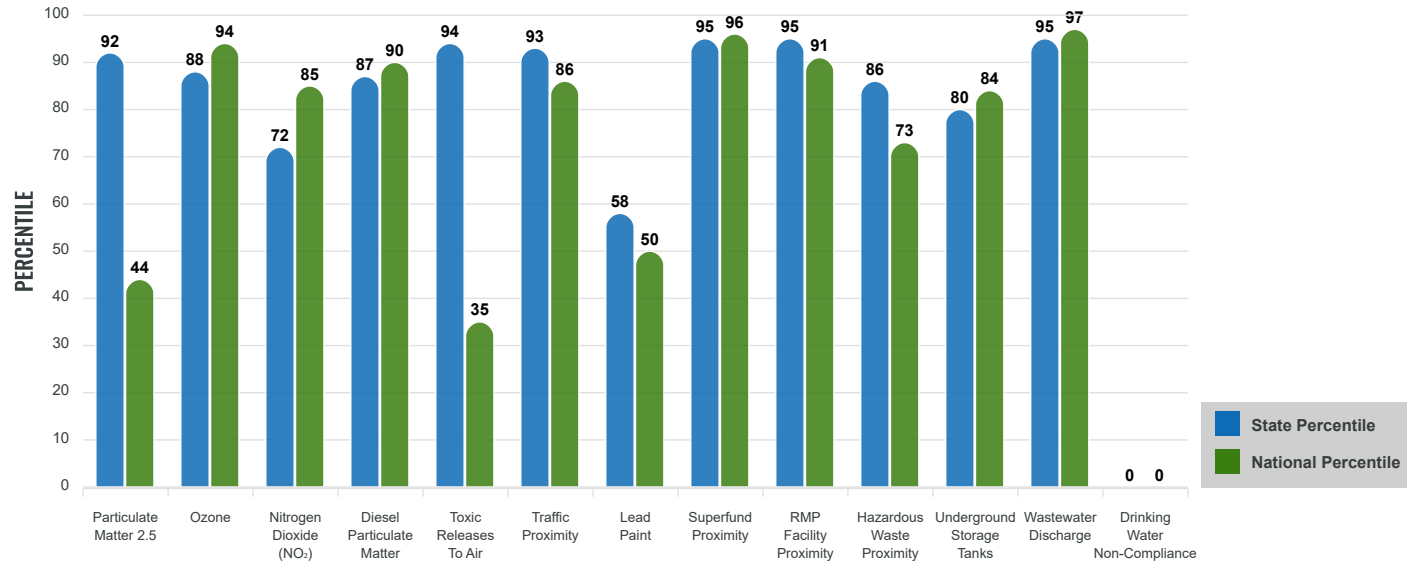


SUPPLEMENTAL INDEXES

The supplemental indexes offer a different perspective on community-level vulnerability. They combine data on percent low income, percent persons with disabilities, percent less than high school education, percent limited English speaking, and percent low life expectancy with a single environmental indicator.



SUPPLEMENTAL INDEXES FOR THE SELECTED LOCATION



Report for Blockgroup: 350010040012

Report produced August 29, 2024 using EJScreen Version 2.3

EJScreen Environmental and Socioeconomic Indicators Data

| SELECTED VARIABLES | VALUE | STATE AVERAGE | PERCENTILE IN STATE | USA AVERAGE | PERCENTILE IN USA |
|---|-----------|---------------|---------------------|-------------|-------------------|
| ENVIRONMENTAL BURDEN INDICATORS | | | | | |
| Particulate Matter 2.5 (µg/m ³) | 7.34 | 6.11 | 82 | 8.45 | 25 |
| Ozone (ppb) | 66.8 | 65.3 | 65 | 61.8 | 77 |
| Nitrogen Dioxide (NO ₂) (ppbv) | 8.7 | 8.1 | 50 | 7.8 | 62 |
| Diesel Particulate Matter (µg/m ³) | 0.227 | 0.187 | 69 | 0.191 | 71 |
| Toxic Releases to Air (toxicity-weighted concentration) | 65 | 29 | 92 | 4,600 | 19 |
| Traffic Proximity (daily traffic count/distance to road) | 1,300,000 | 730,000 | 80 | 1,700,000 | 61 |
| Lead Paint (% Pre-1960 Housing) | 0.071 | 0.19 | 42 | 0.3 | 30 |
| Superfund Proximity (site count/km distance) | 1.3 | 0.34 | 95 | 0.39 | 93 |
| RMP Facility Proximity (facility count/km distance) | 0.83 | 0.2 | 94 | 0.57 | 76 |
| Hazardous Waste Proximity (facility count/km distance) | 0.95 | 1.2 | 63 | 3.5 | 44 |
| Underground Storage Tanks (count/km ²) | 2 | 2.8 | 65 | 3.6 | 62 |
| Wastewater Discharge (toxicity-weighted concentration/m distance) | 230000 | 990000 | 96 | 700000 | 98 |
| Drinking Water Non-Compliance (points) | 0 | 5.6 | 0 | 2.2 | 0 |
| SOCIOECONOMIC INDICATORS | | | | | |
| Demographic Index USA | 2.8 | N/A | N/A | 1.34 | 92 |
| Supplemental Demographic Index USA | 2.47 | N/A | N/A | 1.64 | 88 |
| Demographic Index State | 3.1 | 2.16 | 84 | N/A | N/A |
| Supplemental Demographic Index State | 2.19 | 1.62 | 80 | N/A | N/A |
| People of Color | 79% | 62% | 71 | 40% | 82 |
| Low Income | 66% | 39% | 86 | 30% | 92 |
| Unemployment Rate | 8% | 6% | 67 | 6% | 74 |
| Limited English Speaking Households | 8% | 6% | 75 | 5% | 82 |
| Less Than High School Education | 35% | 14% | 92 | 11% | 94 |
| Under Age 5 | 7% | 5% | 72 | 5% | 70 |
| Over Age 64 | 13% | 20% | 32 | 18% | 36 |

*Diesel particulate matter index is from the EPA's Air Toxics Data Update, which is the Agency's ongoing, comprehensive evaluation of air toxics in the United States. This effort aims to prioritize air toxics, emission sources, and locations of interest for further study. It is important to remember that the air toxics data presented here provide broad estimates of health risks over geographic areas of the country, not definitive risks to specific individuals or locations. More information on the Air Toxics Data Update can be found at: <https://www.epa.gov/haps/air-toxics-data-update>.

Sites reporting to EPA within defined area:

Superfund 2

Other community features within defined area:

Schools 0

| | |
|--|-----|
| Hazardous Waste, Treatment, Storage, and Disposal Facilities | 0 |
| Water Dischargers | |
| . | 158 |
| Air Pollution | 61 |
| Brownfields | 0 |
| Toxic Release Inventory | 7 |

| | |
|-------------------------|---|
| Hospitals | 0 |
| Places of Worship | 0 |

Other environmental data:

| | |
|--------------------------|-----|
| Air Non-attainment | No |
| Impaired Waters | Yes |

| | |
|--|-----|
| Selected location contains American Indian Reservation Lands* | No |
| Selected location contains a "Justice40 (CEJST)" disadvantaged community | Yes |
| Selected location contains an EPA IRA disadvantaged community | Yes |

Report for Blockgroup: 350010040012

Report produced August 29, 2024 using EJScreen Version 2.3

EJScreen Environmental and Socioeconomic Indicators Data

HEALTH INDICATORS

| INDICATOR | VALUE | STATE AVERAGE | STATE PERCENTILE | US AVERAGE | US PERCENTILE |
|---------------------------|-------|---------------|------------------|------------|---------------|
| Low Life Expectancy | 20% | 19% | 54 | 20% | 55 |
| Heart Disease | 5.8 | 5.9 | 45 | 5.8 | 53 |
| Asthma | 12 | 11.2 | 82 | 10.3 | 89 |
| Cancer | 4.7 | 6.1 | 17 | 6.4 | 17 |
| Persons with Disabilities | 13.8% | 17.1% | 36 | 13.7% | 56 |

CLIMATE INDICATORS

| INDICATOR | VALUE | STATE AVERAGE | STATE PERCENTILE | US AVERAGE | US PERCENTILE |
|---------------|-------|---------------|------------------|------------|---------------|
| Flood Risk | 1% | 9% | 24 | 12% | 15 |
| Wildfire Risk | 74% | 58% | 44 | 14% | 88 |

CRITICAL SERVICE GAPS

| INDICATOR | VALUE | STATE AVERAGE | STATE PERCENTILE | US AVERAGE | US PERCENTILE |
|------------------------------|-------|---------------|------------------|------------|---------------|
| Broadband Internet | 22% | 20% | 62 | 13% | 81 |
| Lack of Health Insurance | 16% | 10% | 83 | 9% | 86 |
| Housing Burden | No | N/A | N/A | N/A | N/A |
| Transportation Access Burden | Yes | N/A | N/A | N/A | N/A |
| Food Desert | Yes | N/A | N/A | N/A | N/A |

Report for Blockgroup: 350010040012

Report produced August 29, 2024 using EJScreen Version 2.3

www.epa.gov/ejscreen



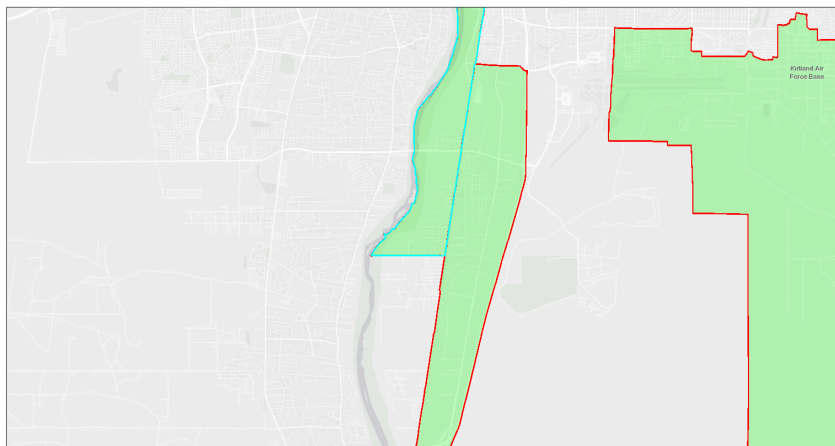
EJScreen Community Report

Attachment 4

This report provides environmental and socioeconomic information for user-defined areas, and combines that data into environmental justice and supplemental indexes.

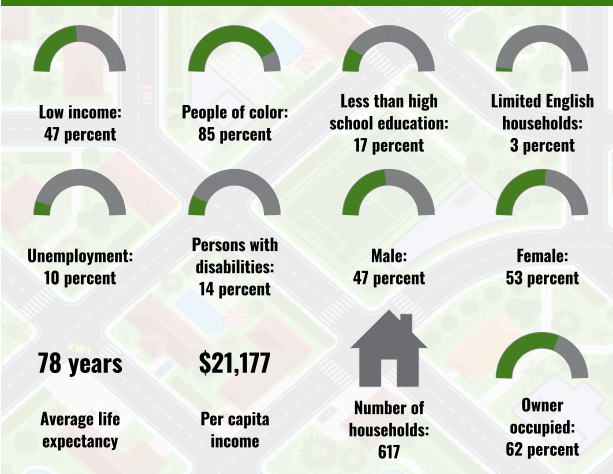
South Valley, NM

Blockgroup: 350010040014
 Population: 2,035
 Area in square miles: 3.39

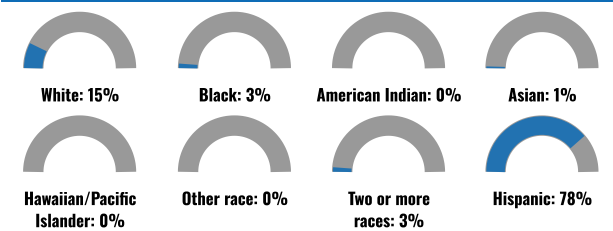


August 29, 2024
 Legend: Project 3 (Green), Project 2 (Orange), Project 1 (Red)
 Scale: 0 0.75 1.5 3 mi / 0 1 2 3 km
Env. HESE: Bernalillo County, NM, City of Albuquerque, Bureau of Land Management, Env. HESE, Garmin, GeoTechnologies, Inc., USGS, EPA.

COMMUNITY INFORMATION



BREAKDOWN BY RACE

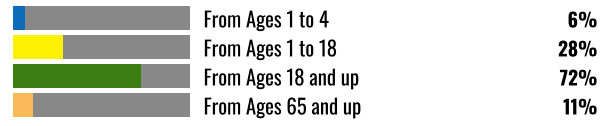


BREAKDOWN BY AGE

LANGUAGES SPOKEN AT HOME

| LANGUAGE | PERCENT |
|----------------------------------|---------|
| English | 59% |
| Spanish | 39% |
| Russian, Polish, or Other Slavic | 2% |
| Total Non-English | 41% |

EJScreen Community Report



LIMITED ENGLISH SPEAKING BREAKDOWN



Notes: Numbers may not sum to totals due to rounding. Hispanic population can be of any race. Source: U.S. Census Bureau, American Community Survey (ACS) 2018-2022. Life expectancy data comes from the Centers for Disease Control.

Report for Blockgroup: 350010040014

Report produced August 29, 2024 using EJScreen Version 2.3

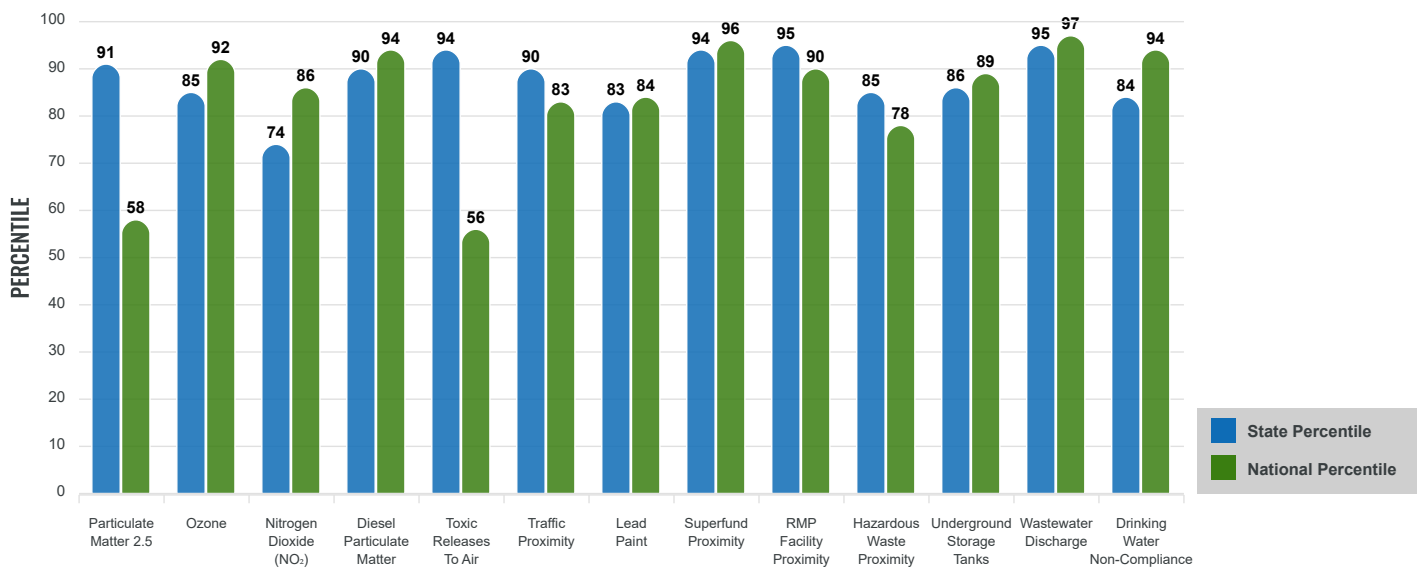
Environmental Justice & Supplemental Indexes

The environmental justice and supplemental indexes are a combination of environmental and socioeconomic information. There are thirteen EJ indexes and supplemental indexes in EJScreen reflecting the 13 environmental indicators. The indexes for a selected area are compared to those for all other locations in the state or nation. For more information and calculation details on the EJ and supplemental indexes, please visit the [EJScreen website](#).

EJ INDEXES

The EJ indexes help users screen for potential EJ concerns. To do this, the EJ index combines data on low income and people of color populations with a single environmental indicator.

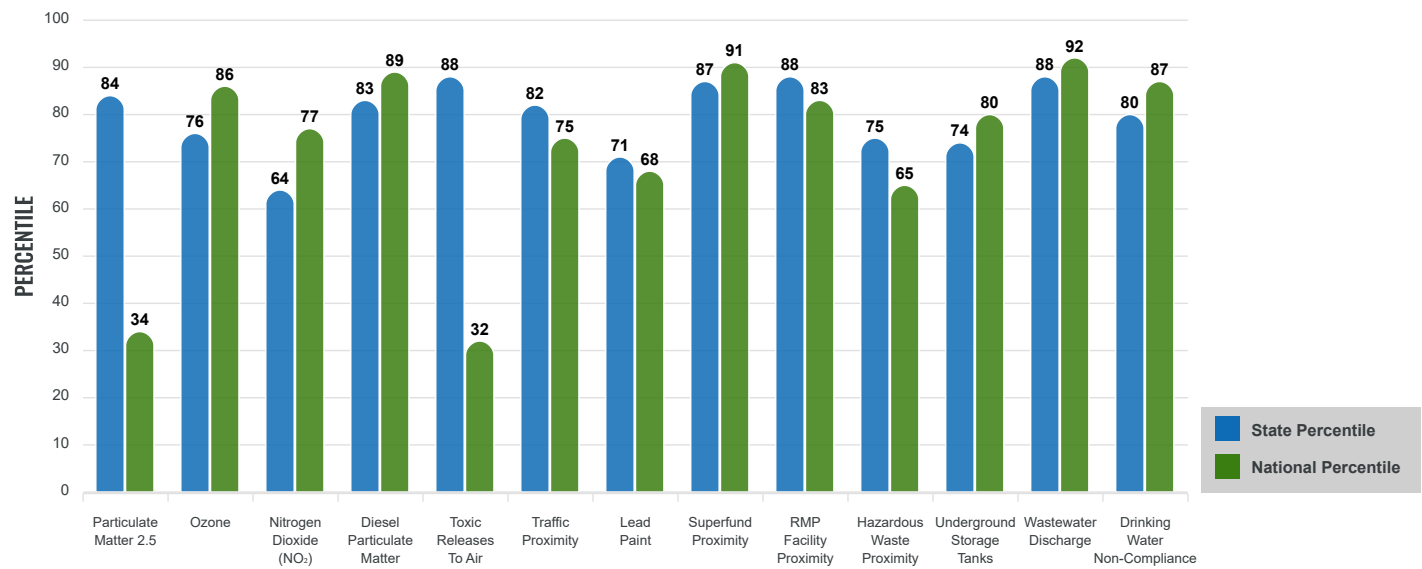
EJ INDEXES FOR THE SELECTED LOCATION



SUPPLEMENTAL INDEXES

The supplemental indexes offer a different perspective on community-level vulnerability. They combine data on percent low income, percent persons with disabilities, percent less than high school education, percent limited English speaking, and percent low life expectancy with a single environmental indicator.

SUPPLEMENTAL INDEXES FOR THE SELECTED LOCATION



Report for Blockgroup: 350010040014

Report produced August 29, 2024 using EJScreen Version 2.3

EJScreen Environmental and Socioeconomic Indicators Data

| SELECTED VARIABLES | VALUE | STATE AVERAGE | PERCENTILE IN STATE | USA AVERAGE | PERCENTILE IN USA |
|---|-----------|---------------|---------------------|-------------|-------------------|
| ENVIRONMENTAL BURDEN INDICATORS | | | | | |
| Particulate Matter 2.5 (µg/m ³) | 7.34 | 6.11 | 82 | 8.45 | 25 |
| Ozone (ppb) | 66.8 | 65.3 | 65 | 61.8 | 77 |
| Nitrogen Dioxide (NO ₂) (ppbv) | 9.2 | 8.1 | 56 | 7.8 | 66 |
| Diesel Particulate Matter (µg/m ³) | 0.366 | 0.187 | 83 | 0.191 | 89 |
| Toxic Releases to Air (toxicity-weighted concentration) | 92 | 29 | 95 | 4,600 | 23 |
| Traffic Proximity (daily traffic count/distance to road) | 1,300,000 | 730,000 | 80 | 1,700,000 | 60 |
| Lead Paint (% Pre-1960 Housing) | 0.29 | 0.19 | 73 | 0.3 | 57 |
| Superfund Proximity (site count/km distance) | 1.4 | 0.34 | 95 | 0.39 | 94 |
| RMP Facility Proximity (facility count/km distance) | 0.9 | 0.2 | 95 | 0.57 | 78 |
| Hazardous Waste Proximity (facility count/km distance) | 1.3 | 1.2 | 67 | 3.5 | 49 |
| Underground Storage Tanks (count/km ²) | 3.5 | 2.8 | 76 | 3.6 | 73 |
| Wastewater Discharge (toxicity-weighted concentration/m distance) | 450000 | 990000 | 97 | 700000 | 99 |
| Drinking Water Non-Compliance (points) | 0.21 | 5.6 | 72 | 2.2 | 74 |
| SOCIOECONOMIC INDICATORS | | | | | |
| Demographic Index USA | 2.45 | N/A | N/A | 1.34 | 87 |
| Supplemental Demographic Index USA | 1.88 | N/A | N/A | 1.64 | 68 |
| Demographic Index State | 2.8 | 2.16 | 73 | N/A | N/A |
| Supplemental Demographic Index State | 1.62 | 1.62 | 53 | N/A | N/A |
| People of Color | 85% | 62% | 78 | 40% | 85 |
| Low Income | 47% | 39% | 64 | 30% | 78 |
| Unemployment Rate | 10% | 6% | 76 | 6% | 81 |
| Limited English Speaking Households | 3% | 6% | 56 | 5% | 68 |
| Less Than High School Education | 17% | 14% | 68 | 11% | 77 |
| Under Age 5 | 6% | 5% | 64 | 5% | 59 |
| Over Age 64 | 11% | 20% | 24 | 18% | 28 |

*Diesel particulate matter index is from the EPA's Air Toxics Data Update, which is the Agency's ongoing, comprehensive evaluation of air toxics in the United States. This effort aims to prioritize air toxics, emission sources, and locations of interest for further study. It is important to remember that the air toxics data presented here provide broad estimates of health risks over geographic areas of the country, not definitive risks to specific individuals or locations. More information on the Air Toxics Data Update can be found at: <https://www.epa.gov/haps/air-toxics-data-update>.

Sites reporting to EPA within defined area:

Superfund 1

Other community features within defined area:

Schools 1

| | |
|--|----|
| Hazardous Waste, Treatment, Storage, and Disposal Facilities | 0 |
| Water Dischargers | 30 |
| Air Pollution | 16 |
| Brownfields | 0 |
| Toxic Release Inventory | 4 |

| | |
|-------------------------|---|
| Hospitals | 0 |
| Places of Worship | 0 |

Other environmental data:

| | |
|--------------------------|-----|
| Air Non-attainment | No |
| Impaired Waters | Yes |

| | |
|--|-----|
| Selected location contains American Indian Reservation Lands* | No |
| Selected location contains a "Justice40 (CEJST)" disadvantaged community | Yes |
| Selected location contains an EPA IRA disadvantaged community | Yes |

Report for Blockgroup: 350010040014

Report produced August 29, 2024 using EJScreen Version 2.3

EJScreen Environmental and Socioeconomic Indicators Data

HEALTH INDICATORS

| INDICATOR | VALUE | STATE AVERAGE | STATE PERCENTILE | US AVERAGE | US PERCENTILE |
|---------------------------|-------|---------------|------------------|------------|---------------|
| Low Life Expectancy | 20% | 19% | 54 | 20% | 55 |
| Heart Disease | 5.8 | 5.9 | 45 | 5.8 | 53 |
| Asthma | 12 | 11.2 | 82 | 10.3 | 89 |
| Cancer | 4.7 | 6.1 | 17 | 6.4 | 17 |
| Persons with Disabilities | 13.8% | 17.1% | 36 | 13.7% | 56 |

CLIMATE INDICATORS

| INDICATOR | VALUE | STATE AVERAGE | STATE PERCENTILE | US AVERAGE | US PERCENTILE |
|---------------|-------|---------------|------------------|------------|---------------|
| Flood Risk | 0% | 9% | 0 | 12% | 0 |
| Wildfire Risk | 98% | 58% | 70 | 14% | 94 |

CRITICAL SERVICE GAPS

| INDICATOR | VALUE | STATE AVERAGE | STATE PERCENTILE | US AVERAGE | US PERCENTILE |
|------------------------------|-------|---------------|------------------|------------|---------------|
| Broadband Internet | 21% | 20% | 61 | 13% | 80 |
| Lack of Health Insurance | 16% | 10% | 83 | 9% | 86 |
| Housing Burden | Yes | N/A | N/A | N/A | N/A |
| Transportation Access Burden | Yes | N/A | N/A | N/A | N/A |
| Food Desert | Yes | N/A | N/A | N/A | N/A |

Report for Blockgroup: 350010040014

Report produced August 29, 2024 using EJScreen Version 2.3

www.epa.gov/ejscreen



EJScreen Community Report

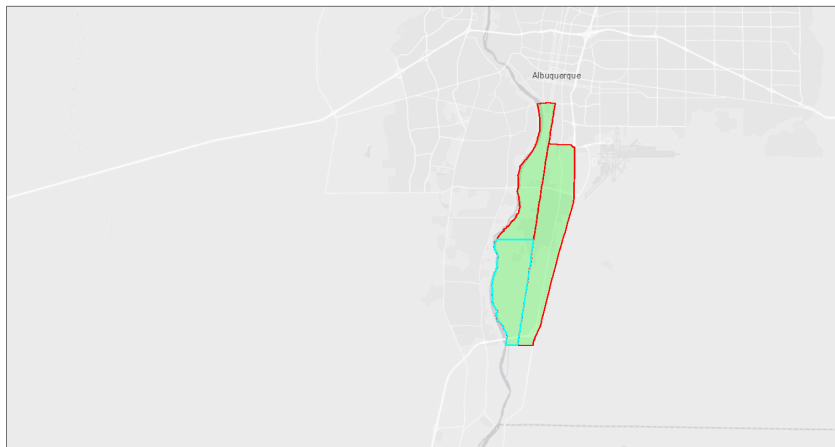
This report provides environmental and socioeconomic information for user-defined areas, and combines that data into environmental justice and supplemental indexes.

South Valley, NM

Blockgroup: 350010040013

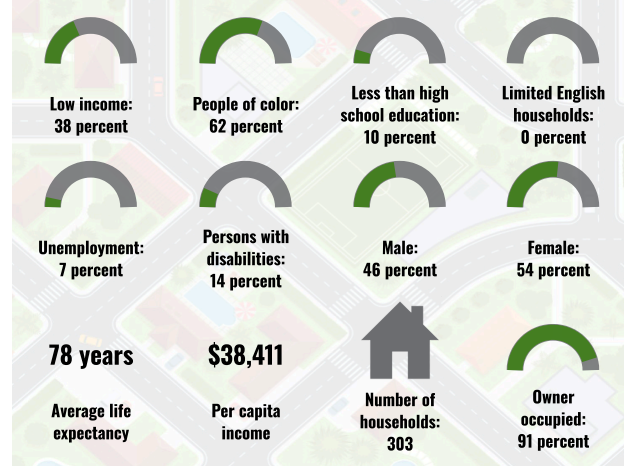
Population: 751

Area in square miles: 3.75

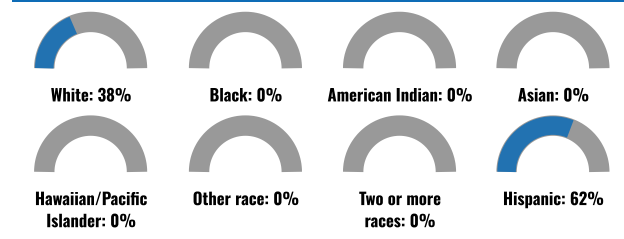


September 3, 2024
 1:144,448
 0 1.5 3 4.5 9 mi
 0 2.25 4.5 9 km
 Project 3
 Project 2
 Project 1
 Bernalillo County, NM; City of Albuquerque; Bureau of Land Management; Env. HRS; Germ. USGS; EPA; NPS; Env. HRS; EPA

COMMUNITY INFORMATION



BREAKDOWN BY RACE



BREAKDOWN BY AGE

LANGUAGES SPOKEN AT HOME

| LANGUAGE | PERCENT |
|----------------------------------|---------|
| English | 59% |
| Spanish | 39% |
| Russian, Polish, or Other Slavic | 2% |
| Total Non-English | 41% |

EJScreen Community Report



LIMITED ENGLISH SPEAKING BREAKDOWN



Notes: Numbers may not sum to totals due to rounding. Hispanic population can be of any race. Source: U.S. Census Bureau, American Community Survey (ACS) 2018-2022. Life expectancy data comes from the Centers for Disease Control.

Report for Blockgroup: 350010040013

Report produced September 3, 2024 using EJScreen Version 2.3

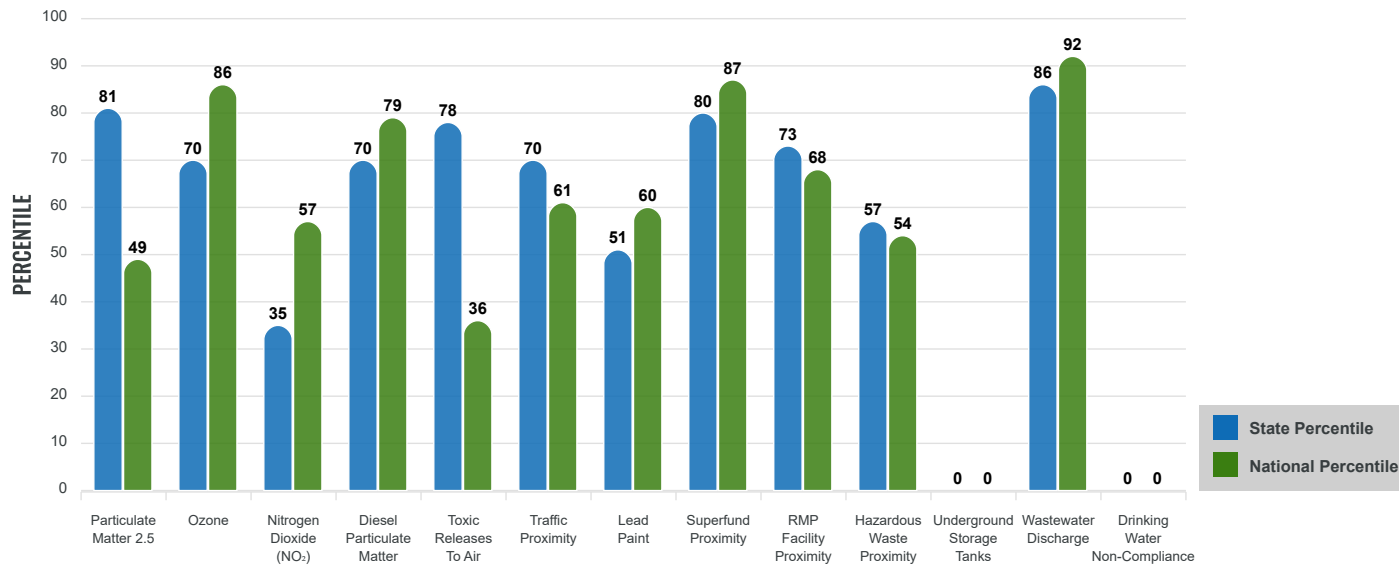
Environmental Justice & Supplemental Indexes

The environmental justice and supplemental indexes are a combination of environmental and socioeconomic information. There are thirteen EJ indexes and supplemental indexes in EJScreen reflecting the 13 environmental indicators. The indexes for a selected area are compared to those for all other locations in the state or nation. For more information and calculation details on the EJ and supplemental indexes, please visit the [EJScreen website](#).

EJ INDEXES

The EJ indexes help users screen for potential EJ concerns. To do this, the EJ index combines data on low income and people of color populations with a single environmental indicator.

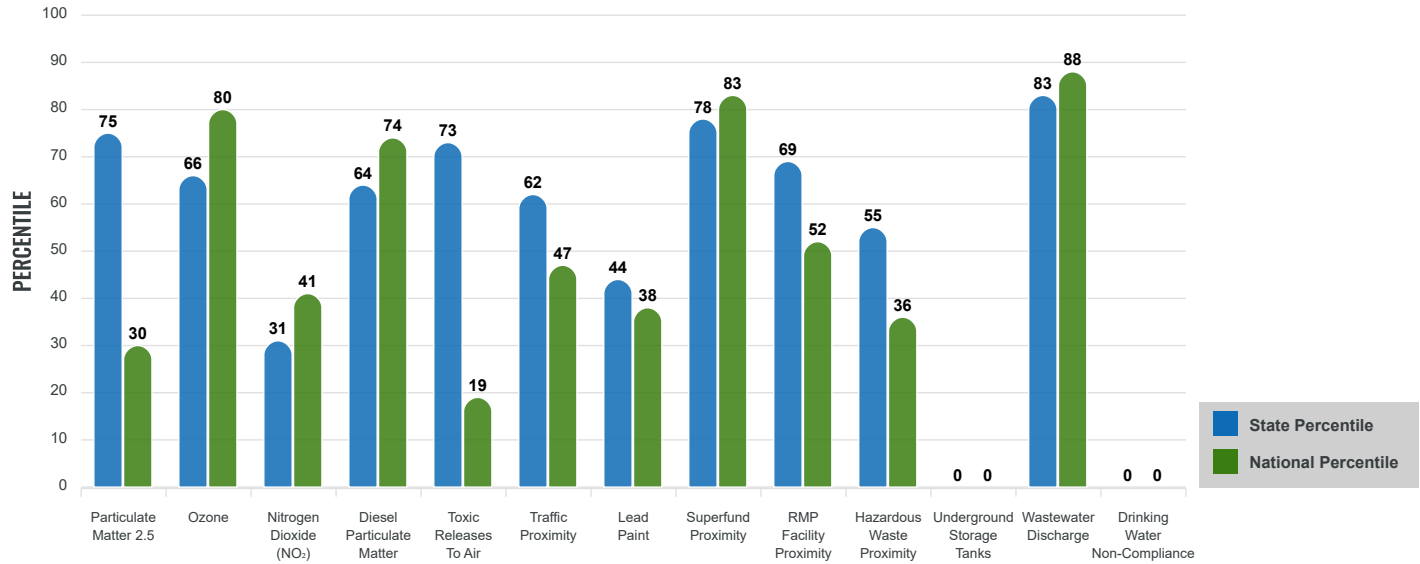
EJ INDEXES FOR THE SELECTED LOCATION



SUPPLEMENTAL INDEXES

The supplemental indexes offer a different perspective on community-level vulnerability. They combine data on percent low income, percent persons with disabilities, percent less than high school education, percent limited English speaking, and percent low life expectancy with a single environmental indicator.

SUPPLEMENTAL INDEXES FOR THE SELECTED LOCATION



Report for Blockgroup: 350010040013

Report produced September 3, 2024 using EJScreen Version 2.3

EJScreen Environmental and Socioeconomic Indicators Data

| SELECTED VARIABLES | VALUE | STATE AVERAGE | PERCENTILE IN STATE | USA AVERAGE | PERCENTILE IN USA |
|---|---------|---------------|---------------------|-------------|-------------------|
| ENVIRONMENTAL BURDEN INDICATORS | | | | | |
| Particulate Matter 2.5 (µg/m ³) | 7.34 | 6.11 | 82 | 8.45 | 25 |
| Ozone (ppb) | 66.8 | 65.3 | 65 | 61.8 | 77 |
| Nitrogen Dioxide (NO ₂) (ppbv) | 6 | 8.1 | 29 | 7.8 | 33 |
| Diesel Particulate Matter (µg/m ³) | 0.213 | 0.187 | 67 | 0.191 | 68 |
| Toxic Releases to Air (toxicity-weighted concentration) | 42 | 29 | 79 | 4,600 | 16 |
| Traffic Proximity (daily traffic count/distance to road) | 470,000 | 730,000 | 64 | 1,700,000 | 38 |
| Lead Paint (% Pre-1960 Housing) | 0.093 | 0.19 | 49 | 0.3 | 34 |
| Superfund Proximity (site count/km distance) | 0.48 | 0.34 | 86 | 0.39 | 83 |
| RMP Facility Proximity (facility count/km distance) | 0.21 | 0.2 | 69 | 0.57 | 44 |
| Hazardous Waste Proximity (facility count/km distance) | 0.36 | 1.2 | 50 | 3.5 | 29 |
| Underground Storage Tanks (count/km ²) | 0 | 2.8 | 0 | 3.6 | 0 |
| Wastewater Discharge (toxicity-weighted concentration/m distance) | 470000 | 990000 | 97 | 700000 | 99 |
| Drinking Water Non-Compliance (points) | 0 | 5.6 | 0 | 2.2 | 0 |
| SOCIOECONOMIC INDICATORS | | | | | |
| Demographic Index USA | 1.87 | N/A | N/A | 1.34 | 74 |
| Supplemental Demographic Index USA | 1.62 | N/A | N/A | 1.64 | 54 |
| Demographic Index State | 2.13 | 2.16 | 48 | N/A | N/A |
| Supplemental Demographic Index State | 1.36 | 1.62 | 38 | N/A | N/A |
| People of Color | 62% | 62% | 47 | 40% | 73 |
| Low Income | 38% | 39% | 49 | 30% | 68 |
| Unemployment Rate | 7% | 6% | 66 | 6% | 72 |
| Limited English Speaking Households | 0% | 6% | 0 | 5% | 0 |
| Less Than High School Education | 10% | 14% | 47 | 11% | 57 |
| Under Age 5 | 0% | 5% | 0 | 5% | 0 |
| Over Age 64 | 39% | 20% | 92 | 18% | 95 |

*Diesel particulate matter index is from the EPA's Air Toxics Data Update, which is the Agency's ongoing, comprehensive evaluation of air toxics in the United States. This effort aims to prioritize air toxics, emission sources, and locations of interest for further study. It is important to remember that the air toxics data presented here provide broad estimates of health risks over geographic areas of the country, not definitive risks to specific individuals or locations. More information on the Air Toxics Data Update can be found at: <https://www.epa.gov/haps/air-toxics-data-update>.

Sites reporting to EPA within defined area:

Superfund 0

Other community features within defined area:

Schools 0

| | |
|--|---|
| Hazardous Waste, Treatment, Storage, and Disposal Facilities | 0 |
| Water Dischargers | 9 |
| Air Pollution | 1 |
| Brownfields | 0 |
| Toxic Release Inventory | 0 |

| | |
|-------------------------|---|
| Hospitals | 0 |
| Places of Worship | 1 |

Other environmental data:

| | |
|--------------------------|-----|
| Air Non-attainment | No |
| Impaired Waters | Yes |

| | |
|--|-----|
| Selected location contains American Indian Reservation Lands* | No |
| Selected location contains a "Justice40 (CEJST)" disadvantaged community | Yes |
| Selected location contains an EPA IRA disadvantaged community | Yes |

Report for Blockgroup: 350010040013

Report produced September 3, 2024 using EJScreen Version 2.3

EJScreen Environmental and Socioeconomic Indicators Data

HEALTH INDICATORS

| INDICATOR | VALUE | STATE AVERAGE | STATE PERCENTILE | US AVERAGE | US PERCENTILE |
|---------------------------|-------|---------------|------------------|------------|---------------|
| Low Life Expectancy | 20% | 19% | 54 | 20% | 55 |
| Heart Disease | 5.8 | 5.9 | 45 | 5.8 | 53 |
| Asthma | 12 | 11.2 | 82 | 10.3 | 89 |
| Cancer | 4.7 | 6.1 | 17 | 6.4 | 17 |
| Persons with Disabilities | 13.8% | 17.1% | 36 | 13.7% | 56 |

CLIMATE INDICATORS

| INDICATOR | VALUE | STATE AVERAGE | STATE PERCENTILE | US AVERAGE | US PERCENTILE |
|---------------|-------|---------------|------------------|------------|---------------|
| Flood Risk | 0% | 9% | 0 | 12% | 0 |
| Wildfire Risk | 96% | 58% | 65 | 14% | 93 |

CRITICAL SERVICE GAPS

| INDICATOR | VALUE | STATE AVERAGE | STATE PERCENTILE | US AVERAGE | US PERCENTILE |
|------------------------------|-------|---------------|------------------|------------|---------------|
| Broadband Internet | 16% | 20% | 49 | 13% | 69 |
| Lack of Health Insurance | 16% | 10% | 83 | 9% | 86 |
| Housing Burden | No | N/A | N/A | N/A | N/A |
| Transportation Access Burden | Yes | N/A | N/A | N/A | N/A |
| Food Desert | Yes | N/A | N/A | N/A | N/A |

Report for Blockgroup: 350010040013

Report produced September 3, 2024 using EJScreen Version 2.3

www.epa.gov/ejscreen